

For Research Use Only

C14orf39 Recombinant monoclonal antibody, PBS Only (Detector)

Catalog Number: 87498-2-PBS



Basic Information

Catalog Number: 87498-2-PBS	GenBank Accession Number: BC125070	Purification Method: Protein A purification
Size: 100ug , Concentration: 1 mg/ml by Nanodrop;	GeneID (NCBI): 317761	CloneNo.: 252892E8
Source: Rabbit	UNIPROT ID: Q8N1H7	
Isotype: IgG	Full Name: chromosome 14 open reading frame 39	
Immunogen Catalog Number: AG33548	Calculated MW: 587 aa, 68 kDa	

Applications

Tested Applications:
Cytometric bead array, Indirect ELISA

Species Specificity:
human

Product Information

87498-2-PBS targets C14orf39 as part of a matched antibody pair:

MP03116-1: 87498-3-PBS capture and 87498-2-PBS detection (validated in Cytometric bead array)

Unconjugated rabbit recombinant monoclonal antibody in PBS only (BSA and azide free) storage buffer at a concentration of 1 mg/mL, ready for conjugation. Created using Proteintech's proprietary in-house recombinant technology. Recombinant production enables unrivalled batch-to-batch consistency, easy scale-up, and future security of supply.

This conjugation ready format makes antibodies ideal for use in many applications including: ELISAs, multiplex assays requiring matched pairs, mass cytometry, and multiplex imaging applications. Antibody use should be optimized by the end user for each application and assay.

Storage

Storage:
Store at -80°C.

Storage Buffer:
PBS only, pH7.3

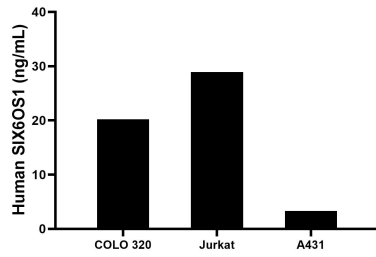
For technical support and original validation data for this product please contact:

T: 1 (888) 4PTGLAB (1-888-478-4522) (toll free in USA), or 1(312) 455-8498 (outside USA)

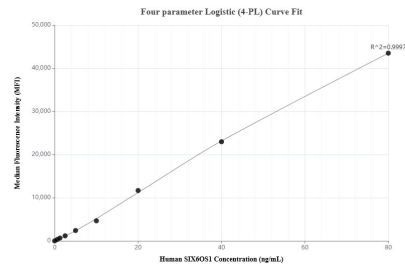
E: proteintech@ptglab.com
W: ptglab.com

This product is exclusively available under Proteintech Group brand and is not available to purchase from any other manufacturer.

Selected Validation Data



The mean SIX6OS1 concentration was determined to be 20.2 ng/mL in COLO 320 cell extract based on a 1.2 mg/mL extract load, 28.9 ng/mL in Jurkat cell extract based on a 1.2 mg/mL extract load, 3.3 ng/mL in A431 cell extract based on a 1.2 mg/mL extract load.



Cytometric bead array standard curve of MP03116-1, SIX6OS1 Recombinant Matched Antibody Pair, PBS Only. Capture antibody: 87498-3-PBS. Detection antibody: 87498-2-PBS. Standard: Ag33548. Range: 0.625-80 ng/mL.