

For Research Use Only

CCRL2 Recombinant monoclonal antibody

Catalog Number: 87505-1-RR



Basic Information

Catalog Number: 87505-1-RR	GenBank Accession Number: BC025717	Purification Method: Protein A purification
Size: 100ul , Concentration: 1000 µg/ml by Nanodrop;	GeneID (NCBI): 9034	CloneNo.: 252522D6
Source: Rabbit	UNIPROT ID: O00421	Recommended Dilutions: WB: 1:1000-1:8000
Isotype: IgG	Full Name: chemokine (C-C motif) receptor-like 2	
	Calculated MW: 344 aa, 40 kDa	
	Observed MW: 47 kDa	

Applications

Tested Applications: WB, ELISA	Positive Controls: WB : HeLa cells, TF-1 cells, HL-60 cells
Species Specificity: human	

Background Information

Chemokine CC motif receptor-like 2 (CCRL2) is a seven-transmembrane domain receptor that shares structural and functional similarities with the family of atypical chemokine receptors (ACKRs) (PMID: 28743719). CCRL2 does not appear to be a signaling receptor, but may have a role in modulating chemokine-triggered immune responses by capturing and internalizing CCL19 or by presenting RARRES2 ligand to CMKLR1, a functional signaling receptors. CCRL2 has been found on almost all hemopoietic cells, including monocytes, macrophages, polymorphonuclear neutrophils (PMNs), T cells, dendritic cells, natural killer cells, and CD34+ progenitor cells, with PMNs expressing the highest levels (PMID: 15188357). CCRL2 is also expressed by barrier cells, such as lymphatic and blood endothelial cells and bronchial and intestinal epithelial cells (PMID: 29056935).

Storage

Storage:
Store at -20°C. Stable for one year after shipment.
Storage Buffer:
PBS with 0.02% sodium azide and 50% glycerol, pH7.3
Aliquoting is unnecessary for -20°C storage

*** 20ul sizes contain 0.1% BSA

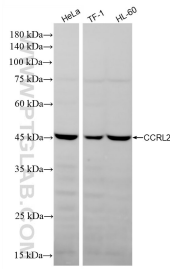
For technical support and original validation data for this product please contact:

T: 1 (888) 4PTGLAB (1-888-478-4522) (toll free in USA), or 1(312) 455-8498 (outside USA)

E: proteintech@ptglab.com
W: ptglab.com

This product is exclusively available under Proteintech Group brand and is not available to purchase from any other manufacturer.

Selected Validation Data



Various lysates were subjected to SDS PAGE followed by western blot with 87505-1-RR (CCL2 antibody) at dilution of 1:4000 incubated at room temperature for 1.5 hours.