

For Research Use Only

PDGF-BB Recombinant monoclonal antibody

Catalog Number: 87506-1-RR



Basic Information

Catalog Number:

87506-1-RR

Size:

100ul , Concentration: 1000 µg/ml by Nanodrop;

Source:

Rabbit

Isotype:

IgG

Immunogen Catalog Number:

EG4856

GenBank Accession Number:

AAH23427.1

GeneID (NCBI):

18591

UNIPROT ID:

P31240

Full Name:

platelet derived growth factor, B polypeptide

Calculated MW:

25kd

Observed MW:

30 kDa

Purification Method:

Protein A purification

CloneNo.:

252712C5

Recommended Dilutions:

WB: 1:5000-1:50000

Applications

Tested Applications:

WB, ELISA

Species Specificity:

human, mouse, rat

Positive Controls:

WB : mouse brain tissue, rat lung tissue, rat brain tissue

Storage

Storage:

Store at -20°C. Stable for one year after shipment.

Storage Buffer:

PBS with 0.02% sodium azide and 50% glycerol, pH7.3

Aliquoting is unnecessary for -20°C storage

*** 20ul sizes contain 0.1% BSA

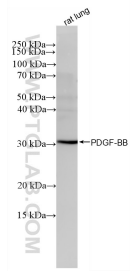
For technical support and original validation data for this product please contact:

T: 1 (888) 4PTGLAB (1-888-478-4522) (toll free in USA), or 1(312) 455-8498 (outside USA)

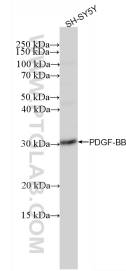
E: proteintech@ptglab.com
W: ptglab.com

This product is exclusively available under Proteintech Group brand and is not available to purchase from any other manufacturer.

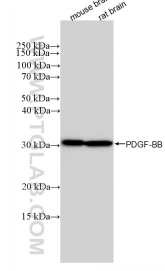
Selected Validation Data



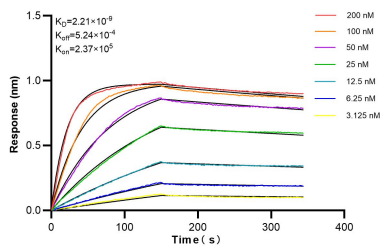
rat lung tissue were subjected to SDS PAGE followed by western blot with 87506-1-RR (PDGF-BB antibody) at dilution of 1:10000 incubated at room temperature for 1.5 hours.



SH-SY5Y cells were subjected to SDS PAGE followed by western blot with 87506-1-RR (PDGF-BB antibody) at dilution of 1:10000 incubated at room temperature for 1.5 hours.



Various lysates were subjected to SDS PAGE followed by western blot with 87506-1-RR (PDGF-BB antibody) at dilution of 1:10000 incubated at room temperature for 1.5 hours.



Biolayer interferometry (BLI) kinetic assays of 87506-1-RR against Mouse PDGF-BB were performed. The affinity constant is 2.21 nM.