

For Research Use Only

Mouse PDGF-BB Recombinant monoclonal antibody, PBS Only (Capture)

Catalog Number: 87506-3-PBS



Basic Information

Catalog Number: 87506-3-PBS	GenBank Accession Number: AAH23427.1	Purification Method: Protein A purification
Size: 100ug, Concentration: 1 mg/ml by Nanodrop;	GeneID (NCBI): 18591	CloneNo.: 252712A9
Source: Rabbit	UNIPROT ID: P31240	
Isotype: IgG	Full Name: platelet derived growth factor, B polypeptide	
Immunogen Catalog Number: EG4856	Calculated MW: 25kd	

Applications

Tested Applications:
Cytometric bead array, Sandwich ELISA, Indirect ELISA

Species Specificity:
mouse

Product Information

87506-3-PBS targets PDGF-BB as part of a matched antibody pair:

MP03061-1: 87506-3-PBS capture and 87506-2-PBS detection (validated in Cytometric bead array)

MP03061-2: 87506-3-PBS capture and 87506-4-PBS detection (validated in Sandwich ELISA)

Unconjugated rabbit recombinant monoclonal antibody in PBS only (BSA and azide free) storage buffer at a concentration of 1 mg/mL, ready for conjugation. Created using Proteintech's proprietary in-house recombinant technology. Recombinant production enables unrivalled batch-to-batch consistency, easy scale-up, and future security of supply.

This conjugation ready format makes antibodies ideal for use in many applications including: ELISAs, multiplex assays requiring matched pairs, mass cytometry, and multiplex imaging applications. Antibody use should be optimized by the end user for each application and assay.

Storage

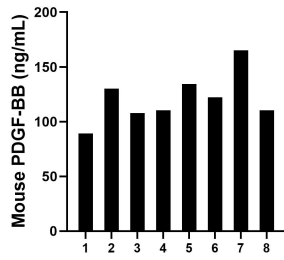
Storage:
Store at -80°C.

Storage Buffer:
PBS only, pH7.3

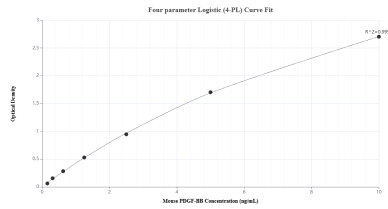
For technical support and original validation data for this product please contact:
T: 1 (888) 4PTGLAB (1-888-478-4522) (toll free in USA), or 1(312) 455-8498 (outside USA) E: proteintech@ptglab.com
W: ptglab.com

This product is exclusively available under Proteintech Group brand and is not available to purchase from any other manufacturer.

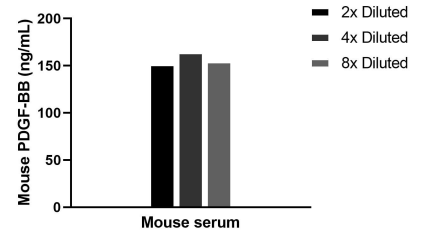
Selected Validation Data



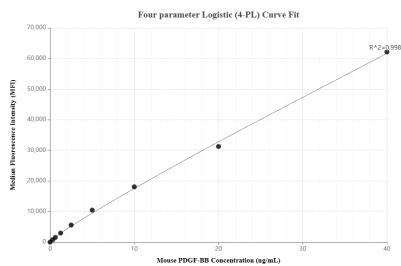
Serum of eight mice was measured. The mouse PDGF-BB concentration of detected samples was determined to be 115.71 ng/mL with a range of 89.30-134.38 ng/mL.



Sandwich ELISA standard curve of MP03061-2, Mouse PDGF-BB Recombinant Matched Antibody Pair - PBS only. 87506-3-PBS was coated to a plate as the capture antibody and incubated with serial dilutions of standard Eg4856. 87506-4-PBS was HRP conjugated as the detection antibody. Range: 0.156-10 ng/mL



The mean PDGF-BB concentration was determined to be 156.8 ng/mL in mouse serum.



Cytometric bead array standard curve of MP03061-1, MOUSE PDGF-BB Recombinant Matched Antibody Pair, PBS Only. Capture antibody: 87506-3-PBS. Detection antibody: 87506-2-PBS. Standard: Eg4856. Range: 0.312-40 ng/mL