

For Research Use Only

CKMT2 Recombinant monoclonal antibody, PBS Only

Catalog Number: 87517-1-PBS



Basic Information

Catalog Number: 87517-1-PBS	GenBank Accession Number: BC029140	Purification Method: Protein A purification
Size: 100ug, Concentration: 1 mg/ml by Nanodrop;	GeneID (NCBI): 1160	CloneNo.: 252920F5
Source: Rabbit	UNIPROT ID: P17540	
Isotype: IgG	Full Name: creatine kinase, mitochondrial 2 (sarcomeric)	
Immunogen Catalog Number: AG3971	Calculated MW: 419 aa, 48 kDa	
	Observed MW: 41-48 kDa	

Applications

Tested Applications:
WB, Indirect ELISA

Species Specificity:
human, mouse, rat

Background Information

CKMT2 (Creatine kinase S-type, mitochondrial), also known as s-MtCK, is one of the creatine kinase (CK) isozymes that are tightly coupled to adenosine triphosphate (ATP) output via adenine nucleotide transport proteins or carriers, making it an important player in ATP synthesis and respiratory chain activity (PMID: 38172162). Enhancing Ckmt2 expression or activity can protect against myocardial injury caused by ischemia-reperfusion injury (PMID: 39457679).

Storage

Storage:
Store at -80°C.

Storage Buffer:
PBS only, pH7.3

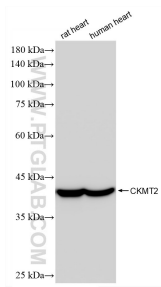
For technical support and original validation data for this product please contact:

T: 1 (888) 4PTGLAB (1-888-478-4522) (toll free in USA), or 1(312) 455-8498 (outside USA)

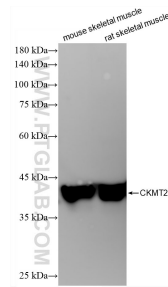
E: proteintech@ptglab.com
W: ptglab.com

This product is exclusively available under Proteintech Group brand and is not available to purchase from any other manufacturer.

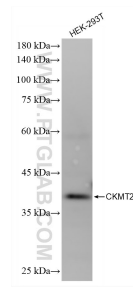
Selected Validation Data



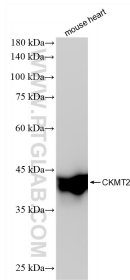
Various lysates were subjected to SDS PAGE followed by western blot with 87517-1-RR (CKMT2 antibody) at dilution of 1:10000 incubated at room temperature for 1.5 hours. This data was developed using the same antibody clone with 87517-1-PBS in a different storage buffer formulation.



Various lysates were subjected to SDS PAGE followed by western blot with 87517-1-RR (CKMT2 antibody) at dilution of 1:10000 incubated at room temperature for 1.5 hours. This data was developed using the same antibody clone with 87517-1-PBS in a different storage buffer formulation.



HEK-293T cells were subjected to SDS PAGE followed by western blot with 87517-1-RR (CKMT2 antibody) at dilution of 1:10000 incubated at room temperature for 1.5 hours. This data was developed using the same antibody clone with 87517-1-PBS in a different storage buffer formulation.



mouse heart tissue were subjected to SDS PAGE followed by western blot with 87517-1-RR (CKMT2 antibody) at dilution of 1:10000 incubated at room temperature for 1.5 hours. This data was developed using the same antibody clone with 87517-1-PBS in a different storage buffer formulation.