

For Research Use Only

CKMT2 Recombinant monoclonal antibody

Catalog Number: 87517-1-RR



Basic Information

Catalog Number: 87517-1-RR	GenBank Accession Number: BC029140	Purification Method: Protein A purification
Size: 100ul , Concentration: 1000 µg/ml by Nanodrop;	GeneID (NCBI): 1160	CloneNo.: 252920F5
Source: Rabbit	UNIPROT ID: P17540	Recommended Dilutions: WB: 1:5000-1:50000
Isotype: IgG	Full Name: creatine kinase, mitochondrial 2 (sarcomeric)	
Immunogen Catalog Number: AG3971	Calculated MW: 419 aa, 48 kDa	
	Observed MW: 41-48 kDa	

Applications

Tested Applications:
WB, ELISA

Species Specificity:
human, mouse, rat

Positive Controls:
WB : rat heart tissue, HEK-293T cells, mouse heart tissue, mouse skeletal muscle tissue, rat skeletal muscle tissue, human heart tissue

Background Information

CKMT2 (Creatine kinase S-type, mitochondrial), also known as s-MtCK, is one of the creatine kinase (CK) isozymes that are tightly coupled to adenosine triphosphate (ATP) output via adenine nucleotide transport proteins or carriers, making it an important player in ATP synthesis and respiratory chain activity (PMID: 38172162). Enhancing Ckmt2 expression or activity can protect against myocardial injury caused by ischemia-reperfusion injury (PMID: 39457679).

Storage

Storage:
Store at -20°C. Stable for one year after shipment.

Storage Buffer:
PBS with 0.02% sodium azide and 50% glycerol, pH7.3

Aliquoting is unnecessary for -20°C storage

*** 20ul sizes contain 0.1% BSA

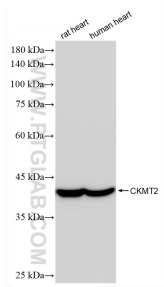
For technical support and original validation data for this product please contact:

T: 1 (888) 4PTGLAB (1-888-478-4522) (toll free in USA), or 1(312) 455-8498 (outside USA)

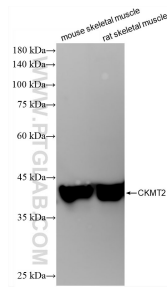
E: proteintech@ptglab.com
W: ptglab.com

This product is exclusively available under Proteintech Group brand and is not available to purchase from any other manufacturer.

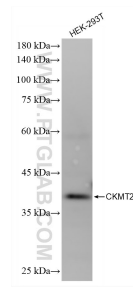
Selected Validation Data



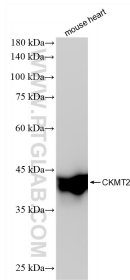
Various lysates were subjected to SDS PAGE followed by western blot with 87517-1-RR (CKMT2 antibody) at dilution of 1:10000 incubated at room temperature for 1.5 hours.



Various lysates were subjected to SDS PAGE followed by western blot with 87517-1-RR (CKMT2 antibody) at dilution of 1:10000 incubated at room temperature for 1.5 hours.



HEK-293T cells were subjected to SDS PAGE followed by western blot with 87517-1-RR (CKMT2 antibody) at dilution of 1:10000 incubated at room temperature for 1.5 hours.



mouse heart tissue were subjected to SDS PAGE followed by western blot with 87517-1-RR (CKMT2 antibody) at dilution of 1:10000 incubated at room temperature for 1.5 hours.