

For Research Use Only

XPP2 Recombinant monoclonal antibody, PBS Only (Detector)

Catalog Number: 87521-2-PBS



Basic Information

Catalog Number: 87521-2-PBS	GenBank Accession Number: NM_003399.5	Purification Method: Protein A purification
Size: 100ug, Concentration: 1 mg/ml by Nanodrop;	GeneID (NCBI): 7512	CloneNo.: 252566F3
Source: Rabbit	UNIPROT ID: O43895	
Isotype: IgG	Full Name: X-prolyl aminopeptidase (aminopeptidase P) 2, membrane-bound	
Immunogen Catalog Number: EG6084	Calculated MW: 76 kDa	

Applications

Tested Applications:
Cytometric bead array, Sandwich ELISA, Indirect ELISA

Species Specificity:
human

Product Information

87521-2-PBS targets XPP2 as part of a matched antibody pair:

MP03058-1: 87521-3-PBS capture and 87521-2-PBS detection (validated in Cytometric bead array)

MP03058-2: 87521-4-PBS capture and 87521-2-PBS detection (validated in Sandwich ELISA)

Unconjugated rabbit recombinant monoclonal antibody in PBS only (BSA and azide free) storage buffer at a concentration of 1 mg/mL, ready for conjugation. Created using Proteintech's proprietary in-house recombinant technology. Recombinant production enables unrivalled batch-to-batch consistency, easy scale-up, and future security of supply.

This conjugation ready format makes antibodies ideal for use in many applications including: ELISAs, multiplex assays requiring matched pairs, mass cytometry, and multiplex imaging applications. Antibody use should be optimized by the end user for each application and assay.

Storage

Storage:
Store at -80°C.
Storage Buffer:
PBS only, pH7.3

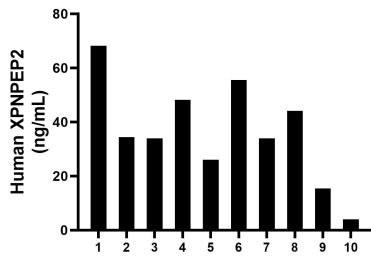
For technical support and original validation data for this product please contact:

T: 1 (888) 4PTGLAB (1-888-478-4522) (toll free in USA), or 1(312) 455-8498 (outside USA)

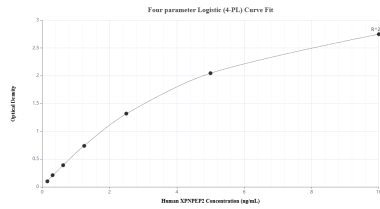
E: proteintech@ptglab.com
W: ptglab.com

This product is exclusively available under Proteintech Group brand and is not available to purchase from any other manufacturer.

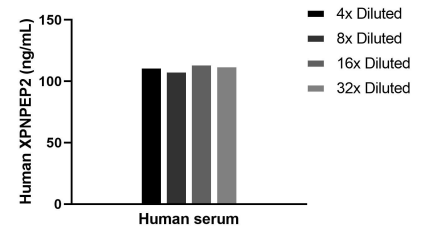
Selected Validation Data



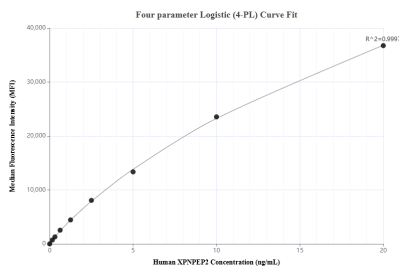
Plasma of ten individual healthy human donors was measured. The human XPNPEP2 concentration of detected samples was determined to be 36.37 ng/mL with a range of 3.99 - 68.15 ng/mL.



Sandwich ELISA standard curve of MP03058-2, Human XPNPEP2 Recombinant Matched Antibody Pair - PBS only. 87521-4-PBS was coated to a plate as the capture antibody and incubated with serial dilutions of standard Eg6084. 87521-2-PBS was HRP conjugated as the detection antibody. Range: 0.156-10 ng/mL



The mean XPNPEP2 concentration was determined to be 111.9 ng/mL in human serum.



Cytometric bead array standard curve of MP03058-1, XPNPEP2 Recombinant Matched Antibody Pair, PBS Only. Capture antibody: 87521-3-PBS. Detection antibody: 87521-2-PBS. Standard: Eg6084. Range: 0.156-20 ng/mL