

For Research Use Only

Phospho-PFKFB2 (Ser483) Recombinant monoclonal antibody

Catalog Number: 87525-1-RR



Basic Information

Catalog Number: 87525-1-RR	GenBank Accession Number: NM_006212	Purification Method: Protein A purification
Size: 100ul , Concentration: 1000 µg/ml by Nanodrop;	GeneID (NCBI): 5208	CloneNo.: 252874F10
Source: Rabbit	UNIPROT ID: O60825	Recommended Dilutions: WB: 1:1000-1:4000
Isotype: IgG	Full Name: 6-phosphofructo-2-kinase/fructose-2,6-bisphosphatase 2	
	Calculated MW: 58 kDa	
	Observed MW: 55 kDa	

Applications

Tested Applications: WB, ELISA	Positive Controls: WB : IGF-1 treated MCF-7 cells, HeLa cells
Species Specificity: human	

Background Information

Phospho-PFKFB2 (Ser483) is the active-site-switching modification of the heart-type bifunctional enzyme 6-phosphofructo-2-kinase/fructose-2,6-bisphosphatase (PFKFB2). Phosphorylation at serine 483, located in the C-terminal regulatory segment, is catalyzed mainly by Akt downstream of PI3K and is essential for maximal 2-kinase activity: it increases the synthesis of fructose-2,6-bisphosphate (F2,6BP), the most potent allosteric activator of 6-phosphofructo-1-kinase (PFK-1), thereby accelerating glycolytic flux and ATP production. (PMID: 34282152)

Storage

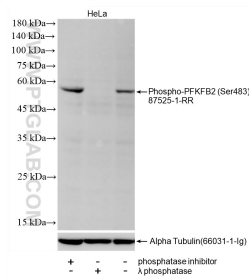
Storage:
Store at -20°C. Stable for one year after shipment.
Storage Buffer:
PBS with 0.02% sodium azide and 50% glycerol, pH7.3
Aliquoting is unnecessary for -20°C storage

***** 20ul sizes contain 0.1%BSA**

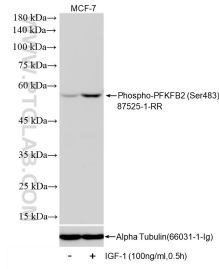
For technical support and original validation data for this product please contact:
T: 1 (888) 4PTGLAB (1-888-478-4522) (toll free in USA), or 1(312) 455-8498 (outside USA)
E: proteintech@ptglab.com
W: ptglab.com

This product is exclusively available under Proteintech Group brand and is not available to purchase from any other manufacturer.

Selected Validation Data



Non-treated HeLa cells, phosphatase inhibitor treated HeLa cells and λ phosphatase treated HeLa cells were subjected to SDS PAGE followed by western blot with 87525-1-RR (Phospho-PFKFB2 (Ser483) antibody) at dilution of 1:2000 incubated at room temperature for 1.5 hours. The membrane was stripped and re-blotted with Alpha Tubulin (66031-1-Ig) antibody as a loading control.



Non-treated MCF-7 cells and IGF-1 treated MCF-7 cells were subjected to SDS PAGE followed by western blot with 87525-1-RR (Phospho-PFKFB2 (Ser483) antibody) at dilution of 1:2000 incubated at room temperature for 1.5 hours. The membrane was stripped and re-blotted with Alpha Tubulin (66031-1-Ig) antibody as a loading control.