

For Research Use Only

Mouse CD3 Delta Recombinant monoclonal antibody, PBS Only (Capture)

Catalog Number: 87532-1-PBS



Basic Information

Catalog Number: 87532-1-PBS	GenBank Accession Number: NM_013487.3	Purification Method: Protein A purification
Size: 100ug, Concentration: 1 mg/ml by Nanodrop;	GeneID (NCBI): 12500	CloneNo.: 252849B8
Source: Rabbit	UNIPROT ID: P04235	
Isotype: IgG	Full Name: CD3 antigen, delta polypeptide	
Immunogen Catalog Number: EG4665	Calculated MW: 19 kDa	
	Observed MW: 25 kDa	

Applications

Tested Applications:
WB, Sandwich ELISA, Indirect ELISA

Species Specificity:
mouse, rat

Product Information

87532-1-PBS targets CD3 Delta as part of a matched antibody pair:

MP03077-2: 87532-1-PBS capture and 87532-7-PBS detection (validated in Sandwich ELISA)

Unconjugated rabbit recombinant monoclonal antibody in PBS only (BSA and azide free) storage buffer at a concentration of 1 mg/mL, ready for conjugation. Created using Proteintech's proprietary in-house recombinant technology. Recombinant production enables unrivalled batch-to-batch consistency, easy scale-up, and future security of supply.

This conjugation ready format makes antibodies ideal for use in many applications including: ELISAs, multiplex assays requiring matched pairs, mass cytometry, and multiplex imaging applications. Antibody use should be optimized by the end user for each application and assay.

Background Information

CD3 is a complex of proteins that directly associates with the T cell receptor (TCR). The TCR/CD3 complex of T-lymphocytes consists of either a TCR alpha/beta or TCR gamma/delta heterodimer coexpressed at the cell surface with the invariant subunits of CD3 labeled gamma, delta, epsilon, zeta, and eta. The TCR recognizes antigens bound to major histocompatibility complex (MHC) molecules. TCR-mediated peptide-MHC recognition is transmitted to the CD3 complex, leading to the intracellular signal transduction. CD3 is considered to be a pan-T cell marker for detection of normal and neoplastic T cells. CD3 delta/CD3D is a single-pass type I membrane protein which consists of an extracellular domain of 84 amino acids, a transmembrane region, and a cytoplasmic domain of 45 amino acids. Defects in CD3 delta are a cause of severe combined immunodeficiency.

Storage

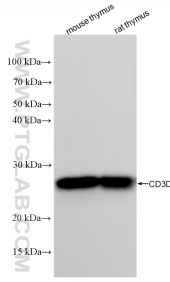
Storage:
Store at -80°C.

Storage Buffer:
PBS only, pH7.3

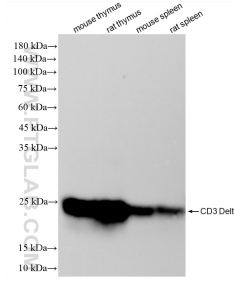
For technical support and original validation data for this product please contact:
T: 1 (888) 4PTGLAB (1-888-478-4522) (toll free in USA), or 1(312) 455-8498 (outside USA)
E: proteintech@ptglab.com
W: ptglab.com

This product is exclusively available under Proteintech Group brand and is not available to purchase from any other manufacturer.

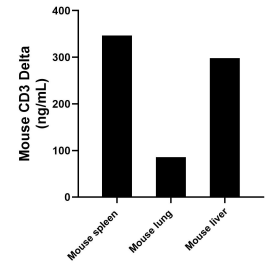
Selected Validation Data



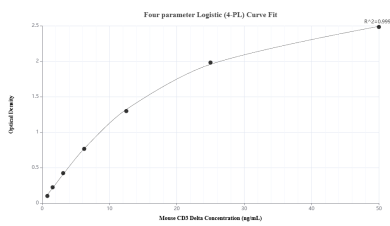
Various lysates were subjected to SDS PAGE followed by western blot with 87532-1-RR (CD3D antibody) at dilution of 1:20000 incubated at room temperature for 1.5 hours. This data was developed using the same antibody clone with 87532-1-PBS in a different storage buffer formulation.



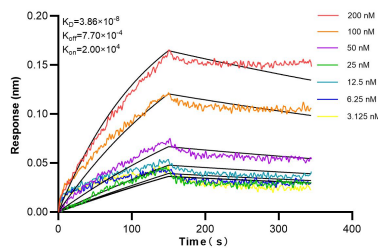
Various lysates were subjected to SDS PAGE followed by western blot with 87532-1-RR (CD3 Delta antibody) at dilution of 1:10000 incubated at room temperature for 1.5 hours. This data was developed using the same antibody clone with 87532-1-PBS in a different storage buffer formulation.



The mean CD3 Delta concentration was determined to be 346.84 ng/mL in mouse spleen tissue extract based on a 5.8 mg/mL extract load, 85.94 ng/mL in mouse lung tissue extract based on a 5.0 mg/mL extract load and 298.06 ng/mL in mouse liver tissue extract based on a 8.4 mg/mL extract load.



Sandwich ELISA standard curve of MP03077-2, Mouse CD3 Delta Recombinant Matched Antibody Pair - PBS only. 87532-1-PBS was coated to a plate as the capture antibody and incubated with serial dilutions of standard Eg4665. 87532-7-PBS was HRP conjugated as the detection antibody. Range: 0.78-50 ng/mL



Biolayer interferometry (BLI) kinetic assays of 87532-1-RR against Mouse CD3 Delta were performed. The affinity constant is 38.6 nM.