

For Research Use Only

# Mouse CD3D Recombinant monoclonal antibody, PBS Only (Detector)

Catalog Number: 87532-7-PBS



## Basic Information

<b>Catalog Number:</b> 87532-7-PBS	<b>GenBank Accession Number:</b> NM_013487.3	<b>Purification Method:</b> Protein A purification
<b>Size:</b> 100ug , Concentration: 1 mg/ml by Nanodrop;	<b>GeneID (NCBI):</b> 12500	<b>CloneNo.:</b> 252849A1
<b>Source:</b> Rabbit	<b>UNIPROT ID:</b> P04235	
<b>Isotype:</b> IgG	<b>Full Name:</b> CD3 antigen, delta polypeptide	
<b>Immunogen Catalog Number:</b> EG4665	<b>Calculated MW:</b> 19 kDa	

## Applications

**Tested Applications:**  
Cytometric bead array, Sandwich ELISA, Indirect ELISA

**Species Specificity:**  
mouse

## Product Information

87532-7-PBS targets CD3D as part of a matched antibody pair:

MP03077-1: 87532-8-PBS capture and 87532-7-PBS detection (validated in Cytometric bead array)

MP03077-2: 87532-1-PBS capture and 87532-7-PBS detection (validated in Sandwich ELISA)

Unconjugated rabbit recombinant monoclonal antibody in PBS only (BSA and azide free) storage buffer at a concentration of 1 mg/mL, ready for conjugation. Created using Proteintech's proprietary in-house recombinant technology. Recombinant production enables unrivalled batch-to-batch consistency, easy scale-up, and future security of supply.

This conjugation ready format makes antibodies ideal for use in many applications including: ELISAs, multiplex assays requiring matched pairs, mass cytometry, and multiplex imaging applications. Antibody use should be optimized by the end user for each application and assay.

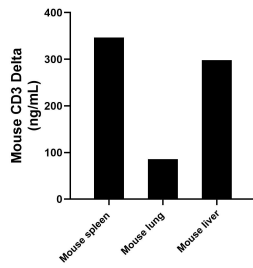
## Storage

**Storage:**  
Store at -80°C.  
**Storage Buffer:**  
PBS only, pH7.3

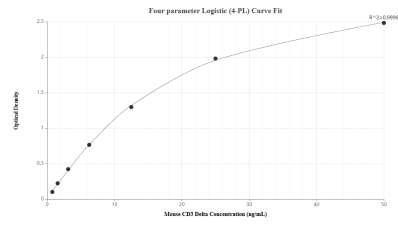
For technical support and original validation data for this product please contact:  
T: 1 (888) 4PTGLAB (1-888-478-4522) (toll free in USA), or 1(312) 455-8498 (outside USA)      E: proteintech@ptglab.com  
W: ptglab.com

**This product is exclusively available under Proteintech Group brand and is not available to purchase from any other manufacturer.**

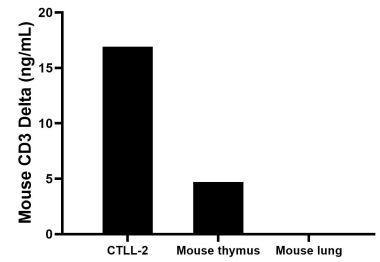
## Selected Validation Data



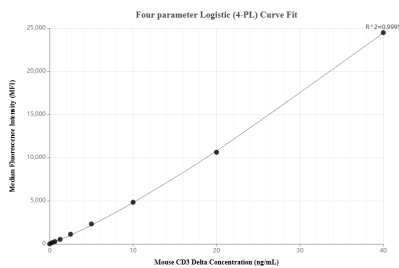
The mean CD3 Delta concentration was determined to be 346.84 ng/mL in mouse spleen tissue extract based on a 5.8 mg/mL extract load, 85.94 ng/mL in mouse lung tissue extract based on a 5.0 mg/mL extract load and 298.06 ng/mL in mouse liver tissue extract based on a 8.4 mg/mL extract load.



Sandwich ELISA standard curve of MP03077-2, Mouse CD3 Delta Recombinant Matched Antibody Pair - PBS only. 87532-1-PBS was coated to a plate as the capture antibody and incubated with serial dilutions of standard Eg4665. 87532-7-PBS was HRP conjugated as the detection antibody. Range: 0.78-50 ng/mL



The mean CD3 Delta concentration was determined to be 16.9 ng/mL in CTLL-2 cell extract based on a 1.2 mg/mL extract load, 4.7 ng/mL in mouse thymus tissue extract based on a 1.2 mg/mL extract load, mouse lung tissue extract were served as a negative control.



Cytometric bead array standard curve of MP03077-1, MOUSE CD3 Delta Recombinant Matched Antibody Pair, PBS Only. Capture antibody: 87532-8-PBS. Detection antibody: 87532-7-PBS. Standard: Eg4665. Range: 0.312-40 ng/mL