

For Research Use Only

NPLOC4 Recombinant monoclonal antibody, PBS Only (Detector)

Catalog Number: 87535-2-PBS



Basic Information

Catalog Number: 87535-2-PBS	GenBank Accession Number: BC025930	Purification Method: Protein A purification
Size: 100ug , Concentration: 1 mg/ml by Nanodrop;	GeneID (NCBI): 55666	CloneNo.: 252885D11
Source: Rabbit	UNIPROT ID: Q8TAT6	
Isotype: IgG	Full Name: nuclear protein localization 4 homolog (S. cerevisiae)	
Immunogen Catalog Number: AG2219	Calculated MW: 608 aa, 68 kDa	

Applications

Tested Applications:
Cytometric bead array, Indirect ELISA

Species Specificity:
human

Product Information

87535-2-PBS targets NPLOC4 as part of a matched antibody pair:

MP03084-1: 87535-3-PBS capture and 87535-2-PBS detection (validated in Cytometric bead array)

Unconjugated rabbit recombinant monoclonal antibody in PBS only (BSA and azide free) storage buffer at a concentration of 1 mg/mL, ready for conjugation. Created using Proteintech's proprietary in-house recombinant technology. Recombinant production enables unrivalled batch-to-batch consistency, easy scale-up, and future security of supply.

This conjugation ready format makes antibodies ideal for use in many applications including: ELISAs, multiplex assays requiring matched pairs, mass cytometry, and multiplex imaging applications. Antibody use should be optimized by the end user for each application and assay.

Storage

Storage:
Store at -80°C.

Storage Buffer:
PBS only, pH7.3

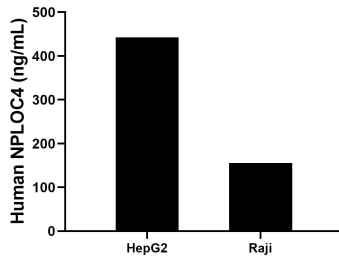
For technical support and original validation data for this product please contact:

T: 1 (888) 4PTGLAB (1-888-478-4522) (toll free in USA), or 1(312) 455-8498 (outside USA)

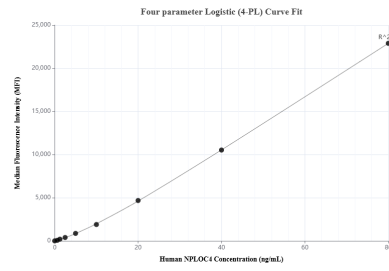
E: proteintech@ptglab.com
W: ptglab.com

This product is exclusively available under Proteintech Group brand and is not available to purchase from any other manufacturer.

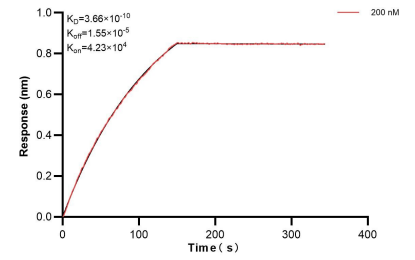
Selected Validation Data



The mean NPLOC4 concentration was determined to be 442.3 ng/mL in HepG2 cell extract based on a 1.2 mg/mL extract load, 155.9 ng/mL in Raji cell extract based on a 1.2 mg/mL extract load.



Cytometric bead array standard curve of MP03084-1, NPLOC4 Recombinant Matched Antibody Pair, PBS Only. Capture antibody: 87535-3-PBS. Detection antibody: 87535-2-PBS. Standard: Ag2219. Range: 0.625-80 ng/mL.



Bi-layer interferometry (BLI) kinetic assay of 87535-2-PBS against Human NPLOC4 was performed. The affinity constant is 0.366 nM.