

For Research Use Only

EPHA2 Recombinant monoclonal antibody

Catalog Number: 87562-1-RR



Basic Information

Catalog Number: 87562-1-RR	GenBank Accession Number: BC037166	Purification Method: Protein A purification
Size: 100ul , Concentration: 1000 µg/ml by Nanodrop;	GeneID (NCBI): 1969	CloneNo.: 252900E11
Source: Rabbit	UNIPROT ID: P29317	Recommended Dilutions: WB: 1:5000-1:50000 IF/ICC: 1:250-1:1000
Isotype: IgG	Full Name: EPH receptor A2	
Immunogen Catalog Number: EG0146	Calculated MW: 976 aa, 108 kDa	
	Observed MW: 130 kDa	

Applications

Tested Applications: WB, IF/ICC, ELISA	Positive Controls: WB : A431 cells, A375 cells, HEK-293 cells
Species Specificity: human	IF/ICC : A431 cells,

Background Information

EPHA2 (Ephrin type-A receptor 2) belongs to the receptor tyrosine kinase (RTK) family, with 16 known receptors and 9 known membrane-bound ligands in all species. Based on the extracellular domain sequence homology, structure, and binding affinity, Eph receptors and their ephrin ligands can be divided into A and B subtypes (PMID: 33962882). EPHA2 contains a conserved N-terminal ligand-bound extracellular domain, a transmembrane domain, and a conserved tyrosine kinase domain (PMID: 8070404).

Storage

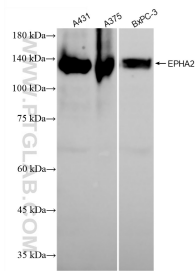
Storage:
Store at -20°C. Stable for one year after shipment.
Storage Buffer:
PBS with 0.02% sodium azide and 50% glycerol, pH7.3
Aliquoting is unnecessary for -20°C storage

***** 20ul sizes contain 0.1%BSA**

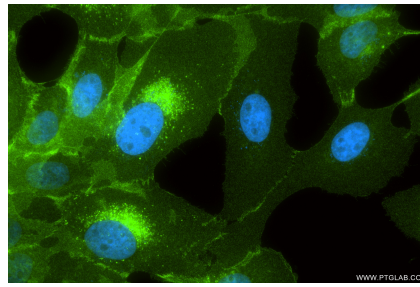
For technical support and original validation data for this product please contact:
T: 1 (888) 4PTGLAB (1-888-478-4522) (toll free in USA), or 1(312) 455-8498 (outside USA)
E: proteintech@ptglab.com
W: ptglab.com

This product is exclusively available under Proteintech Group brand and is not available to purchase from any other manufacturer.

Selected Validation Data



Various lysates were subjected to SDS PAGE followed by western blot with 87562-1-RR (EPHA2 antibody) at dilution of 1:10000 incubated at room temperature for 1.5 hours.



Immunofluorescent analysis of (4% PFA) fixed A431 cells using EPHA2 antibody (87562-1-RR, Clone: 252900E11) at dilution of 1:500 and CoraLite® 488-Conjugated Goat Anti-Rabbit IgG(H+L) (SA00013-2).