

For Research Use Only

# EPHA2 Recombinant monoclonal antibody, PBS Only (Detector)

Catalog Number: 87562-2-PBS



## Basic Information

<b>Catalog Number:</b> 87562-2-PBS	<b>GenBank Accession Number:</b> BC037166	<b>Purification Method:</b> Protein A purification
<b>Size:</b> 100ug , Concentration: 1 mg/ml by Nanodrop;	<b>GeneID (NCBI):</b> 1969	<b>CloneNo.:</b> 252900G3
<b>Source:</b> Rabbit	<b>UNIPROT ID:</b> P29317	
<b>Isotype:</b> IgG	<b>Full Name:</b> EPH receptor A2	
<b>Immunogen Catalog Number:</b> EG0146	<b>Calculated MW:</b> 976 aa, 108 kDa	

## Applications

**Tested Applications:**  
Cytometric bead array, Sandwich ELISA, Indirect ELISA

**Species Specificity:**  
human

## Product Information

87562-2-PBS targets EPHA2 as part of a matched antibody pair:

MP03086-1: 87562-3-PBS capture and 87562-2-PBS detection (validated in Cytometric bead array, Sandwich ELISA)

Unconjugated rabbit recombinant monoclonal antibody in PBS only (BSA and azide free) storage buffer at a concentration of 1 mg/mL, ready for conjugation. Created using Proteintech's proprietary in-house recombinant technology. Recombinant production enables unrivalled batch-to-batch consistency, easy scale-up, and future security of supply.

This conjugation ready format makes antibodies ideal for use in many applications including: ELISAs, multiplex assays requiring matched pairs, mass cytometry, and multiplex imaging applications. Antibody use should be optimized by the end user for each application and assay.

## Storage

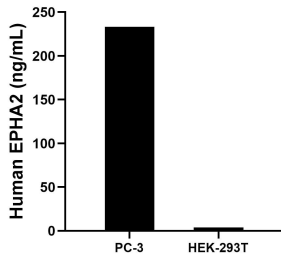
**Storage:**  
Store at -80°C.

**Storage Buffer:**  
PBS only, pH7.3

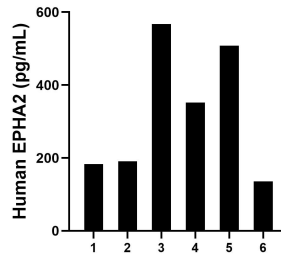
For technical support and original validation data for this product please contact:  
T: 1 (888) 4PTGLAB (1-888-478-4522) (toll free in USA), or 1(312) 455-8498 (outside USA)      E: proteintech@ptglab.com  
W: ptglab.com

**This product is exclusively available under Proteintech Group brand and is not available to purchase from any other manufacturer.**

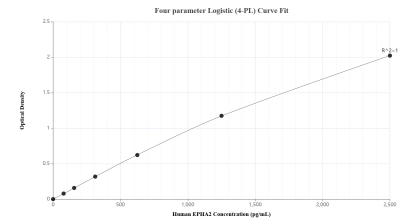
## Selected Validation Data



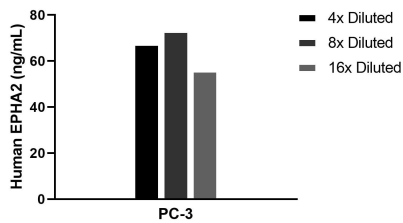
The mean EPHA2 concentration was determined to be 233.1 ng/mL in PC-3 cell extract based on a 1.5 mg/mL extract load and 4.0 ng/mL in HEK-293T cell extract based on a 1.2 mg/mL extract load.



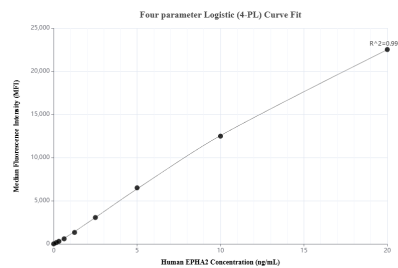
Plasma of six individual healthy human donors was measured. The EPHA2 concentration of detected samples was determined to be 322.9 pg/mL with a range of 135.9-567.2 pg/mL.



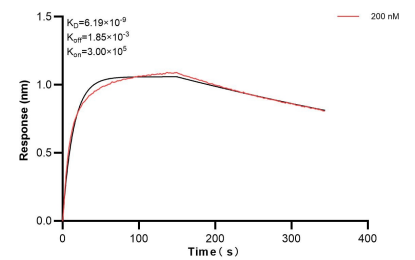
Sandwich ELISA standard curve of MP03086-1, Human EPHA2 Recombinant Matched Antibody Pair - PBS only. 87562-3-PBS was coated to a plate as the capture antibody and incubated with serial dilutions of standard Eg0146. 87562-2-PBS was HRP conjugated as the detection antibody. Range: 78.1-2500 pg/mL.



The mean EPHA2 concentration was determined to be 65.4 ng/mL in PC-3 cell extract based on a 1.2 mg/mL extract load.



Cytometric bead array standard curve of MP03086-1, EPHA2 Recombinant Matched Antibody Pair, PBS Only. Capture antibody: 87562-3-PBS. Detection antibody: 87562-2-PBS. Standard: Eg0146. Range: 0.156-20 ng/mL.



Bi-layer interferometry (BLI) kinetic assay of 87562-2-PBS against Human EPHA2 was performed. The affinity constant is 6.19 nM.