

For Research Use Only

EPHA2 Recombinant monoclonal antibody, PBS Only (Capture)

Catalog Number: 87562-3-PBS



Basic Information

Catalog Number: 87562-3-PBS	GenBank Accession Number: BC037166	Purification Method: Protein A purification
Size: 100ug , Concentration: 1 mg/ml by Nanodrop;	GeneID (NCBI): 1969	CloneNo.: 252900A10
Source: Rabbit	UNIPROT ID: P29317	
Isotype: IgG	Full Name: EPH receptor A2	
Immunogen Catalog Number: EG0146	Calculated MW: 976 aa, 108 kDa	

Applications

Tested Applications:
Cytometric bead array, Sandwich ELISA, Indirect ELISA

Species Specificity:
human

Product Information

87562-3-PBS targets EPHA2 as part of a matched antibody pair:

MP03086-1: 87562-3-PBS capture and 87562-2-PBS detection (validated in Cytometric bead array, Sandwich ELISA)

Unconjugated rabbit recombinant monoclonal antibody in PBS only (BSA and azide free) storage buffer at a concentration of 1 mg/mL, ready for conjugation. Created using Proteintech's proprietary in-house recombinant technology. Recombinant production enables unrivalled batch-to-batch consistency, easy scale-up, and future security of supply.

This conjugation ready format makes antibodies ideal for use in many applications including: ELISAs, multiplex assays requiring matched pairs, mass cytometry, and multiplex imaging applications. Antibody use should be optimized by the end user for each application and assay.

Storage

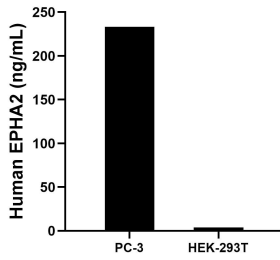
Storage:
Store at -80°C.

Storage Buffer:
PBS only, pH7.3

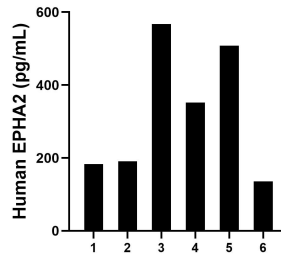
For technical support and original validation data for this product please contact:
T: 1 (888) 4PTGLAB (1-888-478-4522) (toll free in USA), or 1(312) 455-8498 (outside USA) E: proteintech@ptglab.com
W: ptglab.com

This product is exclusively available under Proteintech Group brand and is not available to purchase from any other manufacturer.

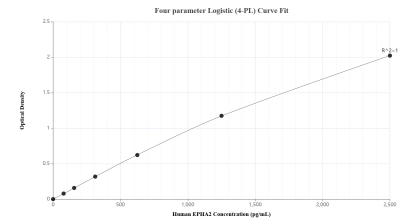
Selected Validation Data



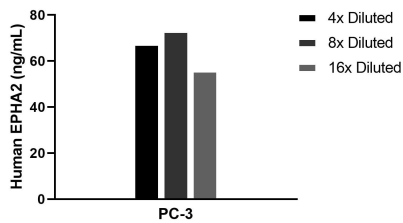
The mean EPHA2 concentration was determined to be 233.1 ng/mL in PC-3 cell extract based on a 1.5 mg/mL extract load and 4.0 ng/mL in HEK-293T cell extract based on a 1.2 mg/mL extract load.



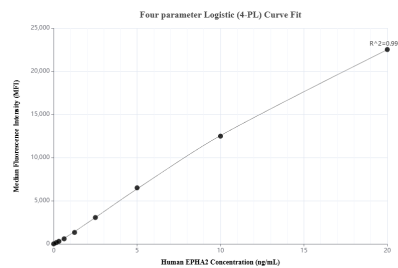
Plasma of six individual healthy human donors was measured. The EPHA2 concentration of detected samples was determined to be 322.9 pg/mL with a range of 135.9-567.2 pg/mL.



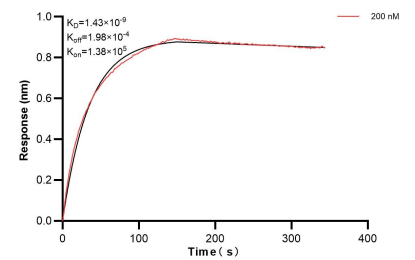
Sandwich ELISA standard curve of MP03086-1, Human EPHA2 Recombinant Matched Antibody Pair - PBS only. 87562-3-PBS was coated to a plate as the capture antibody and incubated with serial dilutions of standard Eg0146. 87562-2-PBS was HRP conjugated as the detection antibody. Range: 78.1-2500 pg/mL.



The mean EPHA2 concentration was determined to be 65.4 ng/mL in PC-3 cell extract based on a 1.2 mg/mL extract load.



Cytometric bead array standard curve of MP03086-1, EPHA2 Recombinant Matched Antibody Pair, PBS Only. Capture antibody: 87562-3-PBS. Detection antibody: 87562-2-PBS. Standard: Eg0146. Range: 0.156-20 ng/mL.



Bi-layer interferometry (BLI) kinetic assay of 87562-3-PBS against Human EPHA2 was performed. The affinity constant is 1.43 nM.