

For Research Use Only

GPBAR1 Recombinant monoclonal antibody, PBS Only (Capture)

Catalog Number: 87567-2-PBS



Basic Information

Catalog Number: 87567-2-PBS	GenBank Accession Number: BC033625	Purification Method: Protein A purification
Size: 100ug , Concentration: 1 mg/ml by Nanodrop;	GeneID (NCBI): 151306	CloneNo.: 252884A2
Source: Rabbit	UNIPROT ID: Q8TDU6	
Isotype: IgG	Full Name: G protein-coupled bile acid receptor 1	
Immunogen Catalog Number: AG24893	Calculated MW: 35 kDa	

Applications

Tested Applications:
Cytometric bead array, Indirect ELISA

Species Specificity:
human

Product Information

87567-2-PBS targets GPBAR1 as part of a matched antibody pair:

MP03050-1: 87567-2-PBS capture and 87567-1-PBS detection (validated in Cytometric bead array)

Unconjugated rabbit recombinant monoclonal antibody in PBS only (BSA and azide free) storage buffer at a concentration of 1 mg/mL, ready for conjugation. Created using Proteintech's proprietary in-house recombinant technology. Recombinant production enables unrivalled batch-to-batch consistency, easy scale-up, and future security of supply.

This conjugation ready format makes antibodies ideal for use in many applications including: ELISAs, multiplex assays requiring matched pairs, mass cytometry, and multiplex imaging applications. Antibody use should be optimized by the end user for each application and assay.

Storage

Storage:
Store at -80°C.

Storage Buffer:
PBS only, pH7.3

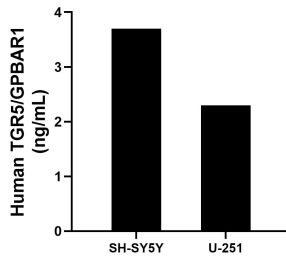
For technical support and original validation data for this product please contact:

T: 1 (888) 4PTGLAB (1-888-478-4522) (toll free in USA), or 1(312) 455-8498 (outside USA)

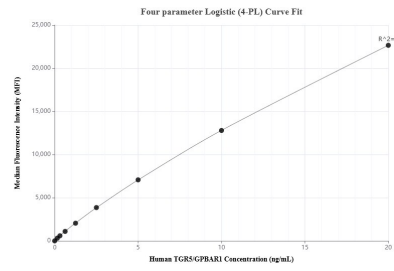
E: proteintech@ptglab.com
W: ptglab.com

This product is exclusively available under Proteintech Group brand and is not available to purchase from any other manufacturer.

Selected Validation Data



The mean TGR5/GPBAR1 concentration was determined to be 3.7 ng/mL in SH-SY5Y cell extract based on a 1.2 mg/mL extract load, 2.3 ng/mL in U-251 cell extract based on a 1.2 mg/mL extract load.



Cytometric bead array standard curve of MP03050-1, TGR5/GPBAR1 Recombinant Matched Antibody Pair, PBS Only. Capture antibody: 87567-2-PBS. Detection antibody: 87567-1-PBS. Standard: Ag24893. Range: 0.156-20 ng/mL.