

For Research Use Only

# NAT8L Recombinant monoclonal antibody, PBS Only

Catalog Number: 87576-1-PBS



## Basic Information

<b>Catalog Number:</b> 87576-1-PBS	<b>GenBank Accession Number:</b> BC103748	<b>Purification Method:</b> Protein A purification
<b>Size:</b> 100ug, Concentration: 1 mg/ml by Nanodrop;	<b>GeneID (NCBI):</b> 339983	<b>CloneNo.:</b> 252994C9
<b>Source:</b> Rabbit	<b>UNIPROT ID:</b> Q8N9F0	
<b>Isotype:</b> IgG	<b>Full Name:</b> N-acetyltransferase 8-like (GCN5-related, putative)	
<b>Immunogen Catalog Number:</b> AG34067	<b>Calculated MW:</b> 134 aa, 15 kDa	
	<b>Observed MW:</b> 45 kDa	

## Applications

**Tested Applications:**  
WB, Indirect ELISA

**Species Specificity:**  
human, mouse, rat

## Background Information

NAT8L (N-acetyltransferase 8-Like) catalyzes the formation of N-acetyl aspartate (NAA) from acetyl-CoA and aspartate. In the brain, NAA delivers the acetate moiety to synthesize acetyl-CoA, which is further used for fatty acid generation (PMID: 24155240). NAT8L modulation may impinge on the metabolic reprogramming of cancer cells (PMID: 36580805). The calculated MW of NAT8L is around 33 kDa, and the observed MW is around 45 kDa.

## Storage

**Storage:**  
Store at -80°C.

**Storage Buffer:**  
PBS only, pH7.3

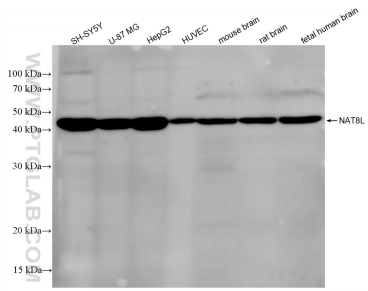
For technical support and original validation data for this product please contact:

T: 1 (888) 4PTGLAB (1-888-478-4522) (toll free in USA), or 1(312) 455-8498 (outside USA)

E: [proteintech@ptglab.com](mailto:proteintech@ptglab.com)  
W: [ptglab.com](http://ptglab.com)

**This product is exclusively available under Proteintech Group brand and is not available to purchase from any other manufacturer.**

## Selected Validation Data



Various lysates were subjected to SDS PAGE followed by western blot with 87576-1-RR (NAT8L antibody) at dilution of 1:5000 incubated at room temperature for 1.5 hours. This data was developed using the same antibody clone with 87576-1-PBS in a different storage buffer formulation.