

For Research Use Only

ECEL1 Recombinant monoclonal antibody

Catalog Number: 87583-1-RR



Basic Information

Catalog Number: 87583-1-RR	GenBank Accession Number: BC050453	Purification Method: Protein A purification
Size: 100ul , Concentration: 1000 µg/ml by Nanodrop;	GeneID (NCBI): 9427	CloneNo.: 252851C9
Source: Rabbit	UNIPROT ID: O95672	Recommended Dilutions: WB: 1:1000-1:4000
Isotype: IgG	Full Name: endothelin converting enzyme-like 1	
Immunogen Catalog Number: AG5460	Calculated MW: 88 kDa	
	Observed MW: 95 kDa	

Applications

Tested Applications: WB, ELISA	Positive Controls: WB : mouse spinal cord tissue, rat spinal cord tissue
Species Specificity: human, mouse, rat	

Background Information

The M13 family has seven members, including ECEL1 (endothelin-converting enzyme-like 1), one of the newest members. ECEL1 is expressed predominantly in the central nervous system. It has been proposed that the enzyme has a role in the nervous regulation of the respiratory system (PMID:14992683). It may contribute to the degradation of peptide hormones and be involved in the inactivation of neuronal peptides. It has 2 isoforms produced by alternative splicing and 3 glycosylation sites. It can be detected a band of 95kDa in CHO cells by western blot because of the heavily glycosylated (PMID:10961933).

Storage

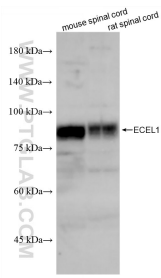
Storage:
Store at -20°C. Stable for one year after shipment.
Storage Buffer:
PBS with 0.02% sodium azide and 50% glycerol, pH7.3
Aliquoting is unnecessary for -20°C storage

***** 20ul sizes contain 0.1% BSA**

For technical support and original validation data for this product please contact:
T: 1 (888) 4PTGLAB (1-888-478-4522) (toll free in USA), or 1(312) 455-8498 (outside USA)
E: proteintech@ptglab.com
W: ptglab.com

This product is exclusively available under Proteintech Group brand and is not available to purchase from any other manufacturer.

Selected Validation Data



Various lysates were subjected to SDS PAGE followed by western blot with 87583-1-RR (ECEL1 antibody) at dilution of 1:2000 incubated at room temperature for 1.5 hours.