

For Research Use Only

# KL Recombinant monoclonal antibody, PBS Only

Catalog Number: 87584-1-PBS



## Basic Information

Catalog Number:

87584-1-PBS

Size:

100ug, Concentration: 1 mg/ml by  
Nanodrop;

Source:

Rabbit

Isotype:

IgG

Immunogen Catalog Number:

AG27759

GenBank Accession Number:

NM\_004795

GeneID (NCBI):

9365

UNIPROT ID:

Q9UEF7

Full Name:

klotho

Calculated MW:

116 kDa

Observed MW:

130-150 kDa

Purification Method:

Protein A purification

CloneNo.:

252897B7

## Applications

Tested Applications:

WB, Indirect ELISA

Species Specificity:

human, mouse

## Storage

Storage:

Store at -80°C.

Storage Buffer:

PBS only, pH7.3

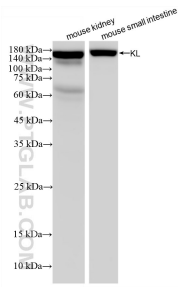
For technical support and original validation data for this product please contact:

T: 1 (888) 4PTGLAB (1-888-478-4522) (toll free  
in USA), or 1(312) 455-8498 (outside USA)

E: [proteintech@ptglab.com](mailto:proteintech@ptglab.com)  
W: [ptglab.com](http://ptglab.com)

This product is exclusively available under Proteintech Group brand and is not available to purchase from any other manufacturer.

## Selected Validation Data



Various lysates were subjected to SDS PAGE followed by western blot with 87584-1-RR (KL antibody) at dilution of 1:2000 incubated at room temperature for 1.5 hours. This data was developed using the same antibody clone with 87584-1-PBS in a different storage buffer formulation.