

For Research Use Only

# KL Recombinant monoclonal antibody

Catalog Number: 87584-1-RR



## Basic Information

Catalog Number:

87584-1-RR

Size:

100ul , Concentration: 1000 µg/ml by Nanodrop;

Source:

Rabbit

Isotype:

IgG

Immunogen Catalog Number:

AG27759

GenBank Accession Number:

NM\_004795

GeneID (NCBI):

9365

UNIPROT ID:

Q9UEF7

Full Name:

klotho

Calculated MW:

116 kDa

Observed MW:

130-150 kDa

Purification Method:

Protein A purification

CloneNo.:

252897B7

Recommended Dilutions:

WB: 1:1000-1:4000

## Applications

Tested Applications:

WB, ELISA

Species Specificity:

human, mouse

Positive Controls:

WB : mouse kidney tissue, mouse small intestine tissue

## Storage

Storage:

Store at -20°C. Stable for one year after shipment.

Storage Buffer:

PBS with 0.02% sodium azide and 50% glycerol, pH7.3

Aliquoting is unnecessary for -20°C storage

\*\*\* 20ul sizes contain 0.1% BSA

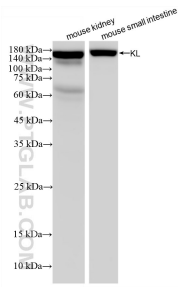
For technical support and original validation data for this product please contact:

T: 1 (888) 4PTGLAB (1-888-478-4522) (toll free in USA), or 1(312) 455-8498 (outside USA)

E: [proteintech@ptglab.com](mailto:proteintech@ptglab.com)  
W: [ptglab.com](http://ptglab.com)

This product is exclusively available under Proteintech Group brand and is not available to purchase from any other manufacturer.

## Selected Validation Data



Various lysates were subjected to SDS PAGE followed by western blot with 87584-1-RR (KL antibody) at dilution of 1:2000 incubated at room temperature for 1.5 hours.