

For Research Use Only

# ABCA9 Recombinant monoclonal antibody, PBS Only (Detector)

Catalog Number: 87588-1-PBS



## Basic Information

<b>Catalog Number:</b> 87588-1-PBS	<b>GenBank Accession Number:</b> BC167781	<b>Purification Method:</b> Protein A purification
<b>Size:</b> 100ug, Concentration: 1 mg/ml by Nanodrop;	<b>GeneID (NCBI):</b> 10350	<b>CloneNo.:</b> 251601E12
<b>Source:</b> Rabbit	<b>UNIPROT ID:</b> Q8IUA7	
<b>Isotype:</b> IgG	<b>Full Name:</b> ATP-binding cassette, sub-family A (ABC1), member 9	
<b>Immunogen Catalog Number:</b> AG35032		

## Applications

**Tested Applications:**  
Sandwich ELISA, Indirect ELISA

**Species Specificity:**  
human

## Product Information

87588-1-PBS targets ABCA9 as part of a matched antibody pair.

MP03063-1: 87588-2-PBS capture and 87588-1-PBS detection (validated in Sandwich ELISA)

Unconjugated rabbit recombinant monoclonal antibody in PBS only (BSA and azide free) storage buffer at a concentration of 1 mg/mL, ready for conjugation. Created using Proteintech's proprietary in-house recombinant technology. Recombinant production enables unrivalled batch-to-batch consistency, easy scale-up, and future security of supply.

This conjugation ready format makes antibodies ideal for use in many applications including: ELISAs, multiplex assays requiring matched pairs, mass cytometry, and multiplex imaging applications. Antibody use should be optimized by the end user for each application and assay.

## Storage

**Storage:**  
Store at -80°C.

**Storage Buffer:**  
PBS only, pH7.3

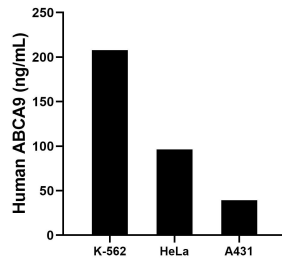
For technical support and original validation data for this product please contact:

T: 1 (888) 4PTGLAB (1-888-478-4522) (toll free in USA), or 1(312) 455-8498 (outside USA)

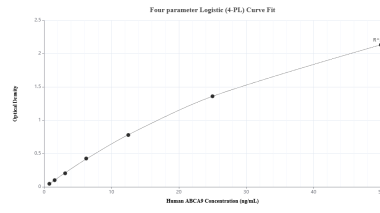
E: [proteintech@ptglab.com](mailto:proteintech@ptglab.com)  
W: [ptglab.com](http://ptglab.com)

**This product is exclusively available under Proteintech Group brand and is not available to purchase from any other manufacturer.**

## Selected Validation Data



The mean ABCA9 concentration was determined to be 207.82 ng/mL in K-562 cell extract based on a 1.2 mg/mL extract load, 96.51 ng/mL in HeLa cell extract based on a 1.2 mg/mL extract load and 39.57 ng/mL in A431 cell extract based on a 1.2 mg/mL extract load.



Sandwich ELISA standard curve of MP03063-1, Human ABCA9 Recombinant Matched Antibody Pair - PBS only. 87588-2-PBS was coated to a plate as the capture antibody and incubated with serial dilutions of standard Ag35032. 87588-1-PBS was HRP conjugated as the detection antibody. Range: 0.781-50 ng/mL