

For Research Use Only

SF4 Recombinant monoclonal antibody

Catalog Number:87600-1-RR



Basic Information

Catalog Number: 87600-1-RR	GenBank Accession Number: BC002986	Purification Method: Protein A purification
Size: 100ul , Concentration: 1000 µg/ml by Nanodrop;	GeneID (NCBI): 57794	CloneNo.: 252925A4
Source: Rabbit	UNIPROT ID: Q8IWZ8	Recommended Dilutions: WB: 1:5000-1:50000 IF/ICC: 1:50-1:500
Isotype: IgG	Full Name: splicing factor 4	
Immunogen Catalog Number: AG8006	Calculated MW: 72 kDa	
	Observed MW: 72-75 kDa	

Applications

Tested Applications: WB, IF/ICC, ELISA	Positive Controls: WB : U2OS cells, mouse testis tissue, rat testis tissue IF/ICC : HepG2 cells,
Species Specificity: human, mouse, rat	

Background Information

SF4 (Splicing factor 4), also known as SUGP1 (SURP and G-patch domain-containing protein 1) was first identified as a putative splicing factor based on domain composition analysis. SUGP1 protein is predicted to contain two SURP motifs, domains of alternative splicing regulators thought to be involved in RNA binding, as well as a G-patch domain, a region of six highly conserved glycine residues commonly found in eukaryotic RNA-processing proteins (PMID: 27206982). Research has shown that SUGP1 is involved in the regulation of cholesterol metabolism (PMID: 31474574).

Storage

Storage:
Store at -20°C. Stable for one year after shipment.
Storage Buffer:
PBS with 0.02% sodium azide and 50% glycerol, pH7.3
Aliquoting is unnecessary for -20°C storage

*** 20ul sizes contain 0.1% BSA

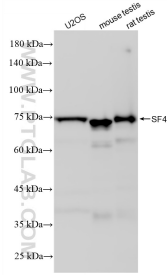
For technical support and original validation data for this product please contact:

T: 1 (888) 4PTGLAB (1-888-478-4522) (toll free in USA), or 1(312) 455-8498 (outside USA)

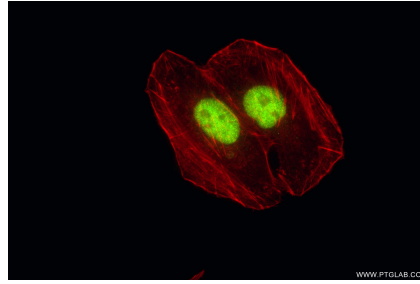
E: proteintech@ptglab.com
W: ptglab.com

This product is exclusively available under Proteintech Group brand and is not available to purchase from any other manufacturer.

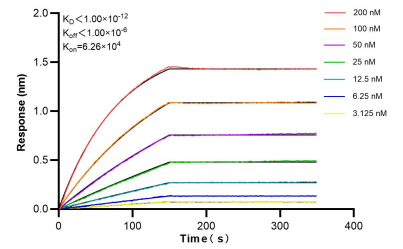
Selected Validation Data



Various lysates were subjected to SDS PAGE followed by western blot with 87600-1-RR (SF4 antibody) at dilution of 1:10000 incubated at room temperature for 1.5 hours.



Immunofluorescent analysis of (4% PFA) fixed HepG2 cells using SF4 antibody (87600-1-RR, Clone: 252925A4) at dilution of 1:200 and CoraLite® 488-Conjugated Goat Anti-Rabbit IgG(H+L) (SA00013-2), CL594-Phalloidin (red).



Bilayer interferometry (BLI) kinetic assays of 87600-1-RR against Human SF4 were performed. The affinity constant is below 1 pM.