

For Research Use Only

CDHR5 Recombinant monoclonal antibody, PBS Only (Detector)

Catalog Number: 87608-1-PBS



Basic Information

Catalog Number: 87608-1-PBS	GenBank Accession Number: NM_021924.5	Purification Method: Protein A purification
Size: 100ug, Concentration: 1 mg/ml by Nanodrop;	GeneID (NCBI): 53841	CloneNo.: 252533F4
Source: Rabbit	UNIPROT ID: Q9HBB8	
Isotype: IgG	Full Name: mucin-like protocadherin	
Immunogen Catalog Number: EG5775	Calculated MW: 88 kDa	

Applications

Tested Applications:
Sandwich ELISA, Indirect ELISA

Species Specificity:
human

Product Information

87608-1-PBS targets CDHR5 as part of a matched antibody pair.

MP03089-1: 87608-2-PBS capture and 87608-1-PBS detection (validated in Sandwich ELISA)

Unconjugated rabbit recombinant monoclonal antibody in PBS only (BSA and azide free) storage buffer at a concentration of 1 mg/mL, ready for conjugation. Created using Proteintech's proprietary in-house recombinant technology. Recombinant production enables unrivalled batch-to-batch consistency, easy scale-up, and future security of supply.

This conjugation ready format makes antibodies ideal for use in many applications including: ELISAs, multiplex assays requiring matched pairs, mass cytometry, and multiplex imaging applications. Antibody use should be optimized by the end user for each application and assay.

Storage

Storage:
Store at -80°C.

Storage Buffer:
PBS only, pH7.3

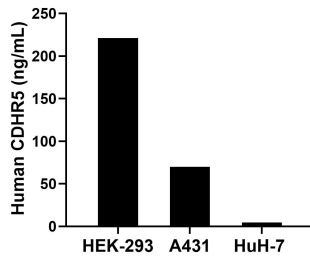
For technical support and original validation data for this product please contact:

T: 1 (888) 4PTGLAB (1-888-478-4522) (toll free in USA), or 1(312) 455-8498 (outside USA)

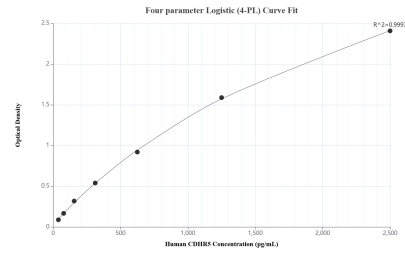
E: proteintech@ptglab.com
W: ptglab.com

This product is exclusively available under Proteintech Group brand and is not available to purchase from any other manufacturer.

Selected Validation Data



The mean CDHR5 concentration was determined to be 220.9 ng/mL in HEK-293 cell extract based on a 1.2 mg/mL extract load, 69.7 ng/mL in A431 cell extract based on a 1.2 mg/mL extract load and 4.5 ng/mL in HuH-7 cell extract based on a 1.2 mg/mL extract load.



Sandwich ELISA standard curve of MP03089-1, Human CDHR5 Recombinant Matched Antibody Pair - PBS only. 87608-2-PBS was coated to a plate as the capture antibody and incubated with serial dilutions of standard Eg5775. 87608-1-PBS was HRP conjugated as the detection antibody. Range: 39.1-2500 pg/mL.