

For Research Use Only

# EN1 Recombinant monoclonal antibody, PBS Only (Detector)

Catalog Number: 87609-1-PBS



## Basic Information

<b>Catalog Number:</b> 87609-1-PBS	<b>GenBank Accession Number:</b> NM_001426	<b>Purification Method:</b> Protein A purification
<b>Size:</b> 100ug , Concentration: 1 mg/ml by Nanodrop;	<b>GeneID (NCBI):</b> 2019	<b>CloneNo.:</b> 252831E11
<b>Source:</b> Rabbit	<b>UNIPROT ID:</b> Q05925	
<b>Isotype:</b> IgG	<b>Full Name:</b> engrailed homeobox 1	
<b>Immunogen Catalog Number:</b> AG26688	<b>Calculated MW:</b> 40 kDa	

## Applications

**Tested Applications:**  
Sandwich ELISA, Indirect ELISA

**Species Specificity:**  
human

## Product Information

87609-1-PBS targets EN1 as part of a matched antibody pair:

MP03088-1: 87609-2-PBS capture and 87609-1-PBS detection (validated in Sandwich ELISA)

Unconjugated rabbit recombinant monoclonal antibody in PBS only (BSA and azide free) storage buffer at a concentration of 1 mg/mL, ready for conjugation. Created using Proteintech's proprietary in-house recombinant technology. Recombinant production enables unrivalled batch-to-batch consistency, easy scale-up, and future security of supply.

This conjugation ready format makes antibodies ideal for use in many applications including: ELISAs, multiplex assays requiring matched pairs, mass cytometry, and multiplex imaging applications. Antibody use should be optimized by the end user for each application and assay.

## Storage

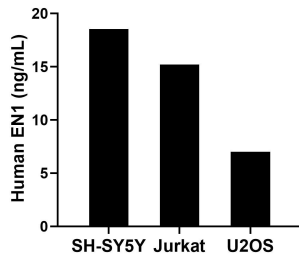
**Storage:**  
Store at -80°C.

**Storage Buffer:**  
PBS only, pH7.3

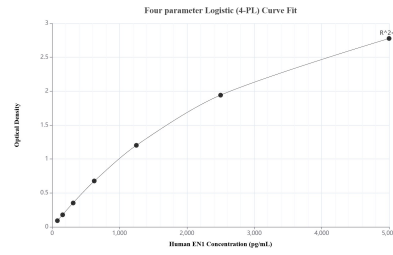
For technical support and original validation data for this product please contact:  
T: 1 (888) 4PTGLAB (1-888-478-4522) (toll free in USA), or 1(312) 455-8498 (outside USA)      E: proteintech@ptglab.com  
W: ptglab.com

**This product is exclusively available under Proteintech Group brand and is not available to purchase from any other manufacturer.**

## Selected Validation Data



The mean EN1 concentration was determined to be 18.5 ng/mL in SH-SY5Y cell extract based on a 1.2 mg/mL extract load, 15.2 ng/mL in Jurkat cell extract based on a 1.2 mg/mL extract load and 7.0 ng/mL in U2OS cell extract based on a 1.2 mg/mL extract load.



Sandwich ELISA standard curve of MP03088-1, Human EN1 Recombinant Matched Antibody Pair - PBS only. 87609-2-PBS was coated to a plate as the capture antibody and incubated with serial dilutions of standard Ag26688. 87609-1-PBS was HRP conjugated as the detection antibody. Range: 78.1-5000 pg/mL.