

For Research Use Only

# CNTN1 Recombinant monoclonal antibody, PBS Only (Detector)

Catalog Number: 87612-1-PBS



## Basic Information

<b>Catalog Number:</b> 87612-1-PBS	<b>GenBank Accession Number:</b> NM_001843.3	<b>Purification Method:</b> Protein A purification
<b>Size:</b> 100ug, Concentration: 1 mg/ml by Nanodrop;	<b>GeneID (NCBI):</b> 1272	<b>CloneNo.:</b> 252906D4
<b>Source:</b> Rabbit	<b>UNIPROT ID:</b> Q12860	
<b>Isotype:</b> IgG	<b>Full Name:</b> contactin 1	
<b>Immunogen Catalog Number:</b> EG6555	<b>Calculated MW:</b> 113 kDa	
	<b>Observed MW:</b> 135 kDa	

## Applications

**Tested Applications:**  
WB, IP, Sandwich ELISA, Indirect ELISA

**Species Specificity:**  
human, mouse, rat

## Product Information

87612-1-PBS targets CNTN1 as part of a matched antibody pair:

MP03227-1: 87612-2-PBS capture and 87612-1-PBS detection (validated in Sandwich ELISA)

Unconjugated rabbit recombinant monoclonal antibody in PBS only (BSA and azide free) storage buffer at a concentration of 1 mg/mL, ready for conjugation. Created using Proteintech's proprietary in-house recombinant technology. Recombinant production enables unrivalled batch-to-batch consistency, easy scale-up, and future security of supply.

This conjugation ready format makes antibodies ideal for use in many applications including: ELISAs, multiplex assays requiring matched pairs, mass cytometry, and multiplex imaging applications. Antibody use should be optimized by the end user for each application and assay.

## Background Information

Contactin-1 (CNTN1), also known as Glycoprotein gp135 or Neural cell surface protein F3, is a neuronal cell adhesion molecule of the immunoglobulin superfamily (PMID: 3049624). It consists of six Ig domains, four fibronectin-like motifs, and a glycosylphosphatidylinositol (GPI)-moiety. Expressed by the central and peripheral neurons, CNTN1 contributes to the formation and function of neuronal connections. It plays a role in axon extension and formation of septate-like junctions between axons and myelinating glial cells (PMID: 23724143). In addition, acting as a ligand for Notch, CNTN1 initiates a NOTCH/DTX1 signaling pathway that promotes oligodendrocyte maturation and myelination (PMID: 14567914).

## Storage

**Storage:**  
Store at -80°C.  
**Storage Buffer:**  
PBS only, pH7.3

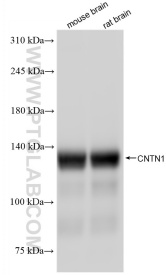
For technical support and original validation data for this product please contact:

T: 1 (888) 4PTGLAB (1-888-478-4522) (toll free in USA), or 1(312) 455-8498 (outside USA)

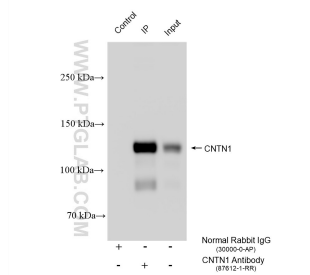
E: [proteintech@ptglab.com](mailto:proteintech@ptglab.com)  
W: [ptglab.com](http://ptglab.com)

**This product is exclusively available under Proteintech Group brand and is not available to purchase from any other manufacturer.**

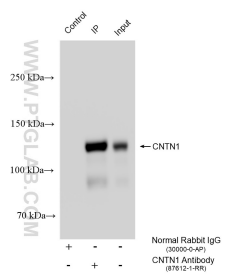
## Selected Validation Data



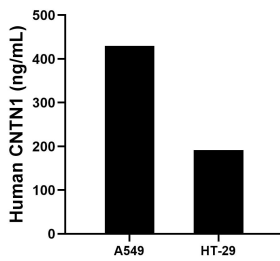
Various lysates were subjected to SDS PAGE followed by western blot with 87612-1-RR (CNTN1 antibody) at dilution of 1:20000 incubated at room temperature for 1.5 hours. This data was developed using the same antibody clone with 87612-1-PBS in a different storage buffer formulation.



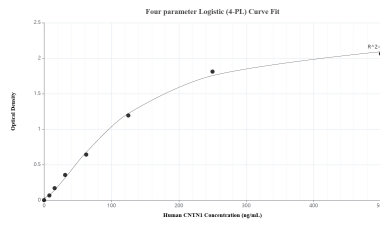
IP result of anti-CNTN1 (IP:87612-1-RR, 4 ug; Detection: 87612-1-RR 1:5000) with mouse brain tissue lysate 1680 ug. This data was developed using the same antibody clone with 87612-1-PBS in a different storage buffer formulation.



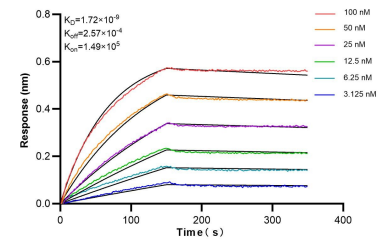
IP result of anti-CNTN1 (IP:87612-1-RR, 4 ug; Detection: 87612-1-RR 1:5000) with rat brain tissue lysate 1720 ug. This data was developed using the same antibody clone with 87612-1-PBS in a different storage buffer formulation.



The mean CNTN1 concentration was determined to be 429.57 ng/mL in A549 cell extract based on a 1.20 mg/mL extract load and 191.70 ng/mL in HT-29 cell extract based on a 1.10 mg/mL extract load.



Sandwich ELISA standard curve of MP03227-1, Human CNTN1 Recombinant Matched Antibody Pair - PBS only. 87612-2-PBS was coated to a plate as the capture antibody and incubated with serial dilutions of standard Eg6555. 87612-1-PBS was HRP conjugated as the detection antibody. Range: 7.81-500 ng/mL.



Bi-layer interferometry (BLI) kinetic assays of 87612-1-RR against Human CNTN1 were performed. The affinity constant is 1.72 nM.