

For Research Use Only

# ENPP1 Recombinant monoclonal antibody, PBS Only

Catalog Number: 87613-1-PBS



## Basic Information

<b>Catalog Number:</b> 87613-1-PBS	<b>GenBank Accession Number:</b> NM_006208.2	<b>Purification Method:</b> Protein A purification
<b>Size:</b> 100ug , Concentration: 1 mg/ml by Nanodrop;	<b>GeneID (NCBI):</b> 5167	<b>CloneNo.:</b> 252965A5
<b>Source:</b> Rabbit	<b>UNIPROT ID:</b> P22413	
<b>Isotype:</b> IgG	<b>Full Name:</b> ectonucleotide pyrophosphatase/phosphodiesterase 1	
<b>Immunogen Catalog Number:</b> EG6489	<b>Calculated MW:</b> 105 kDa	
	<b>Observed MW:</b> 110-140 kD	

## Applications

**Tested Applications:**  
WB, Indirect ELISA

**Species Specificity:**  
human, mouse, rat

## Background Information

ENPP1, also known as PC1 or PC-1, is a type II transmembrane glycoprotein that serves as a critical enzymatic gatekeeper at the interface of cellular metabolism, mineral homeostasis, and immune signaling. It plays a crucial role in bone mineralization and soft tissue calcification, through hydrolyzing high-energy phosphate bonds to produce inorganic pyrophosphate (PPi), a potent inhibitor of ectopic mineral deposition (PMID: 37871131, PMID: 30799235, PMID: 40535334). ENPP1 inhibition protects cGAMP and ATP and reduces adenosine levels in the tumor microenvironment, activates antigen-presenting cells and increases T-cell infiltration promoting anticancer immunity (PMID: 40410143).

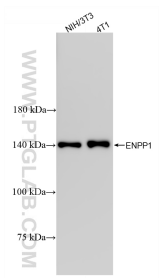
## Storage

**Storage:**  
Store at -80°C.  
**Storage Buffer:**  
PBS only, pH7.3

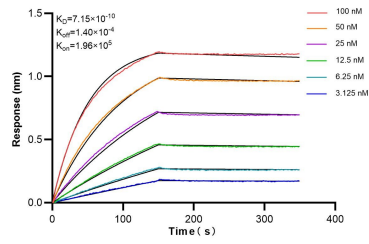
For technical support and original validation data for this product please contact:  
T: 1 (888) 4PTGLAB (1-888-478-4522) (toll free in USA), or 1(312) 455-8498 (outside USA)      E: proteintech@ptglab.com  
W: ptglab.com

This product is exclusively available under Proteintech Group brand and is not available to purchase from any other manufacturer.

## Selected Validation Data



Various lysates were subjected to SDS PAGE followed by western blot with 87613-1-RR (ENPP1 antibody) at dilution of 1:10000 incubated at room temperature for 1.5 hours. This data was developed using the same antibody clone with 87613-1-PBS in a different storage buffer formulation.



Bilayer interferometry (BLI) kinetic assays of 87657-1-RR against Human ENPP1 were performed. The affinity constant is 0.715 nM.