

For Research Use Only

ENPP1 Recombinant monoclonal antibody

Catalog Number: 87613-1-RR



Basic Information

Catalog Number: 87613-1-RR	GenBank Accession Number: NM_006208.2	Purification Method: Protein A purification
Size: 100ul , Concentration: 1000 µg/ml by Nanodrop;	GeneID (NCBI): 5167	CloneNo.: 252965A5
Source: Rabbit	UNIPROT ID: P22413	Recommended Dilutions: WB: 1:5000-1:50000
Isotype: IgG	Full Name: ectonucleotide pyrophosphatase/phosphodiesterase 1	
Immunogen Catalog Number: EG6489	Calculated MW: 105 kDa	
	Observed MW: 110-140 kD	

Applications

Tested Applications: WB, ELISA	Positive Controls: WB : NIH/3T3 cells, 4T1 cells
Species Specificity: human, mouse, rat	

Background Information

ENPP1, also known as PC1 or PC-1, is a type II transmembrane glycoprotein that serves as a critical enzymatic gatekeeper at the interface of cellular metabolism, mineral homeostasis, and immune signaling. It plays a crucial role in bone mineralization and soft tissue calcification, through hydrolyzing high-energy phosphate bonds to produce inorganic pyrophosphate (PPi), a potent inhibitor of ectopic mineral deposition (PMID: 37871131, PMID: 30799235, PMID: 40535334). ENPP1 inhibition protects cGAMP and ATP and reduces adenosine levels in the tumor microenvironment, activates antigen-presenting cells and increases T-cell infiltration promoting anticancer immunity (PMID: 40410143).

Storage

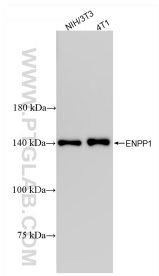
Storage:
Store at -20°C. Stable for one year after shipment.
Storage Buffer:
PBS with 0.02% sodium azide and 50% glycerol, pH7.3
Aliquoting is unnecessary for -20°C storage

*** 20ul sizes contain 0.1% BSA

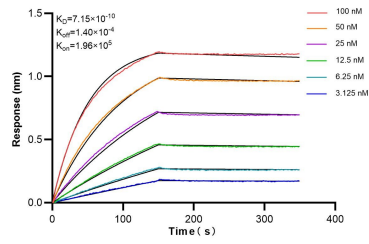
For technical support and original validation data for this product please contact:
T: 1 (888) 4PTGLAB (1-888-478-4522) (toll free in USA), or 1(312) 455-8498 (outside USA)
E: proteintech@ptglab.com
W: ptglab.com

This product is exclusively available under Proteintech Group brand and is not available to purchase from any other manufacturer.

Selected Validation Data



Various lysates were subjected to SDS PAGE followed by western blot with 87613-1-RR (ENPP1 antibody) at dilution of 1:10000 incubated at room temperature for 1.5 hours.



Bilayer interferometry (BLI) kinetic assays of 87657-1-RR against Human ENPP1 were performed. The affinity constant is 0.715 nM.