

For Research Use Only

Phospho-MSK1 (Ser376) Recombinant monoclonal antibody

Catalog Number:87619-1-RR



Basic Information

Catalog Number: 87619-1-RR	GenBank Accession Number: BC017187	Purification Method: Protein A purification
Size: 100ul , Concentration: 1000 µg/ml by Nanodrop;	GeneID (NCBI): 9252	CloneNo.: 252671D9
Source: Rabbit	UNIPROT ID: O75582	Recommended Dilutions: WB: 1:2000-1:10000
Isotype: IgG	Full Name: ribosomal protein S6 kinase, 90kDa, polypeptide 5	
	Calculated MW: 549aa,62 kDa; 802aa,90 kDa	
	Observed MW: 90 kDa	

Applications

Tested Applications: WB, ELISA	Positive Controls: WB : Calyculin A treated HeLa cells, PMA treated HEK-293T cells
Species Specificity: human	

Background Information

Mitogen- and stress-activated kinase 1 (MSK1) is a protein kinase that plays a crucial role in the regulation of gene expression in response to various stimuli, including mitogens, stress, and inflammatory signals. ERK1/2 or p38 MAPK activate MSK1 by phosphorylating Thr581 and Ser360; this primes the C-terminal domain, which then autophosphorylates Ser376 (and Ser212) to unlock the N-terminal catalytic site. (PMID: 15568999)

Storage

Storage:
Store at -20°C. Stable for one year after shipment.
Storage Buffer:
PBS with 0.02% sodium azide and 50% glycerol, pH7.3
Aliquoting is unnecessary for -20°C storage

*** 20ul sizes contain 0.1% BSA

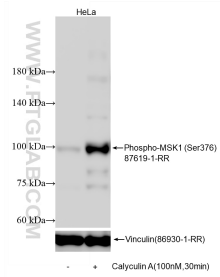
For technical support and original validation data for this product please contact:

T: 1 (888) 4PTGLAB (1-888-478-4522) (toll free in USA), or 1(312) 455-8498 (outside USA)

E: proteintech@ptglab.com
W: ptglab.com

This product is exclusively available under Proteintech Group brand and is not available to purchase from any other manufacturer.

Selected Validation Data



Non-treated HeLa cells and Calyculin A treated HeLa cells were subjected to SDS PAGE followed by western blot with 87619-1-RR (Phospho-MSK1 (Ser376) antibody) at dilution of 1:5000 incubated at room temperature for 1.5 hours. The membrane was stripped and re-blotted with Vinculin (86930-1-RR) antibody as a loading control.