

For Research Use Only

ZBTB2 Recombinant monoclonal antibody, PBS Only (Detector)

Catalog Number: 87621-1-PBS



Basic Information

Catalog Number: 87621-1-PBS	GenBank Accession Number: BC020172	Purification Method: Protein A purification
Size: 100ug , Concentration: 1 mg/ml by Nanodrop;	GeneID (NCBI): 57621	CloneNo.: 252923G8
Source: Rabbit	UNIPROT ID: Q8N680	
Isotype: IgG	Full Name: zinc finger and BTB domain containing 2	
Immunogen Catalog Number: AG24041	Observed MW: 70-75 kDa	

Applications

Tested Applications:
WB, Cytometric bead array, Indirect ELISA

Species Specificity:
human, mouse, rat

Product Information

87621-1-PBS targets ZBTB2 as part of a matched antibody pair:

MP03125-1: 87621-2-PBS capture and 87621-1-PBS detection (validated in Cytometric bead array)

Unconjugated rabbit recombinant monoclonal antibody in PBS only (BSA and azide free) storage buffer at a concentration of 1 mg/mL, ready for conjugation. Created using Proteintech's proprietary in-house recombinant technology. Recombinant production enables unrivalled batch-to-batch consistency, easy scale-up, and future security of supply.

This conjugation ready format makes antibodies ideal for use in many applications including: ELISAs, multiplex assays requiring matched pairs, mass cytometry, and multiplex imaging applications. Antibody use should be optimized by the end user for each application and assay.

Storage

Storage:
Store at -80°C.

Storage Buffer:
PBS only, pH7.3

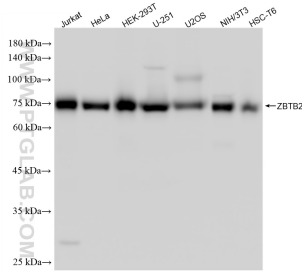
For technical support and original validation data for this product please contact:

T: 1 (888) 4PTGLAB (1-888-478-4522) (toll free in USA), or 1(312) 455-8498 (outside USA)

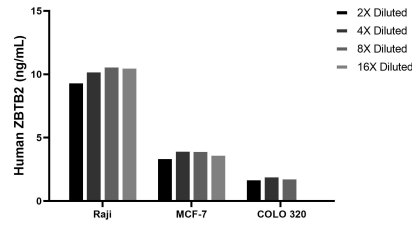
E: proteintech@ptglab.com
W: ptglab.com

This product is exclusively available under Proteintech Group brand and is not available to purchase from any other manufacturer.

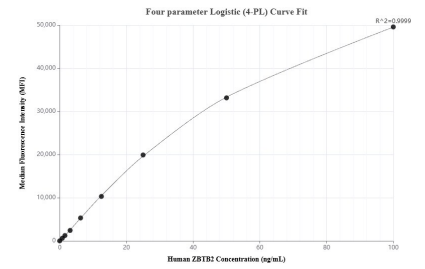
Selected Validation Data



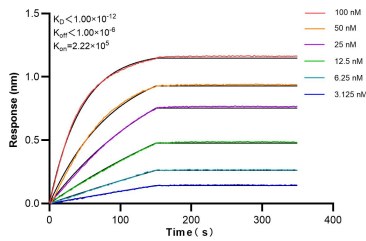
Various lysates were subjected to SDS PAGE followed by western blot with 87621-1-RR (ZBTB2 antibody) at dilution of 1:10000 incubated at room temperature for 1.5 hours. This data was developed using the same antibody clone with 87621-1-PBS in a different storage buffer formulation.



The mean ZBTB2 concentration was determined to be 10.3 ng/mL in Raji cell extract based on a 1.2 mg/mL extract load, 3.8 ng/mL in MCF-7 cell extract based on a 1.2 mg/mL extract load, 1.9 ng/mL in COLO 320 cell extract based on a 1.2 mg/mL extract load.



Cytometric bead array standard curve of MP03125-1, ZBTB2 Recombinant Matched Antibody Pair, PBS Only. Capture antibody: 87621-2-PBS. Detection antibody: 87621-1-PBS. Standard: Ag24041. Range: 0.781-100 ng/mL



Biolayer interferometry (BLI) kinetic assays of 87621-1-RR against Human ZBTB2 were performed. The affinity constant is below 1 pM.