

For Research Use Only

# MAP1A Recombinant monoclonal antibody

Catalog Number:87623-1-RR



## Basic Information

<b>Catalog Number:</b> 87623-1-RR	<b>GenBank Accession Number:</b> NM_002373	<b>Purification Method:</b> Protein A purification
<b>Size:</b> 100ul , Concentration: 1000 µg/ml by Nanodrop;	<b>GeneID (NCBI):</b> 4130	<b>CloneNo.:</b> 252699A2
<b>Source:</b> Rabbit	<b>UNIPROT ID:</b> P78559	<b>Recommended Dilutions:</b> WB: 1:5000-1:50000
<b>Isotype:</b> IgG	<b>Full Name:</b> microtubule-associated protein 1A	
	<b>Calculated MW:</b> 305 kDa	
	<b>Observed MW:</b> 26-28 kDa	

## Applications

<b>Tested Applications:</b> WB, ELISA	<b>Positive Controls:</b> WB : mouse brain tissue, rat brain tissue
<b>Species Specificity:</b> human, mouse, rat	

## Background Information

The assembly of microtubules, an essential step in neurogenesis, is modulated by the family of microtubule-associated proteins (MAPs). These proteins have been divided into 2 main groups by molecular mass, high molecular weight MAPs, which include MAP1A, MAP1B, and MAP2, and another group of intermediate-sized proteins, which include the abundant tau MAPs. MAP1A is the largest brain MAP and is expressed prominently in dendrites and to a lesser extent in cell bodies and axons. This protein is involved in differentiation of axons and dendrites as well as maintenance of the microtubule cytoskeleton in mature neurons. This antibody recognizes MAP1 light chain LC2.

## Storage

**Storage:**  
Store at -20°C. Stable for one year after shipment.  
**Storage Buffer:**  
PBS with 0.02% sodium azide and 50% glycerol, pH7.3  
Aliquoting is unnecessary for -20°C storage

\*\*\* 20ul sizes contain 0.1% BSA

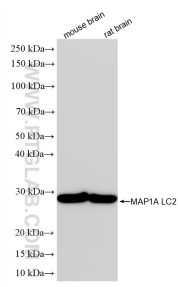
For technical support and original validation data for this product please contact:

T: 1 (888) 4PTGLAB (1-888-478-4522) (toll free in USA), or 1(312) 455-8498 (outside USA)

E: [proteintech@ptglab.com](mailto:proteintech@ptglab.com)  
W: [ptglab.com](http://ptglab.com)

This product is exclusively available under Proteintech Group brand and is not available to purchase from any other manufacturer.

## Selected Validation Data



Various lysates were subjected to SDS PAGE followed by western blot with 87623-1-RR (MAP1A antibody) at dilution of 1:10000 incubated at room temperature for 1.5 hours.