

For Research Use Only

PEL1 Recombinant monoclonal antibody, PBS Only (Capture)

Catalog Number: 87624-4-PBS



Basic Information

Catalog Number: 87624-4-PBS	GenBank Accession Number: BC011419	Purification Method: Protein A purification
Size: 100ug, Concentration: 1 mg/ml by Nanodrop;	GeneID (NCBI): 57162	CloneNo.: 252984G4
Source: Rabbit	UNIPROT ID: Q96FA3	
Isotype: IgG	Full Name: pellino homolog 1 (Drosophila)	
Immunogen Catalog Number: AG2683	Calculated MW: 418 aa, 46 kDa	

Applications

Tested Applications:
Cytometric bead array, Indirect ELISA

Species Specificity:
human

Product Information

87624-4-PBS targets PEL1 as part of a matched antibody pair:

MP03109-1: 87624-4-PBS capture and 87624-1-PBS detection (validated in Cytometric bead array)

Unconjugated rabbit recombinant monoclonal antibody in PBS only (BSA and azide free) storage buffer at a concentration of 1 mg/mL, ready for conjugation. Created using Proteintech's proprietary in-house recombinant technology. Recombinant production enables unrivalled batch-to-batch consistency, easy scale-up, and future security of supply.

This conjugation ready format makes antibodies ideal for use in many applications including: ELISAs, multiplex assays requiring matched pairs, mass cytometry, and multiplex imaging applications. Antibody use should be optimized by the end user for each application and assay.

Storage

Storage:
Store at -80°C.

Storage Buffer:
PBS only, pH7.3

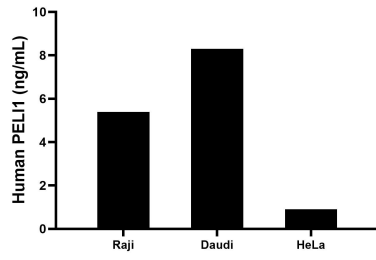
For technical support and original validation data for this product please contact:

T: 1 (888) 4PTGLAB (1-888-478-4522) (toll free in USA), or 1(312) 455-8498 (outside USA)

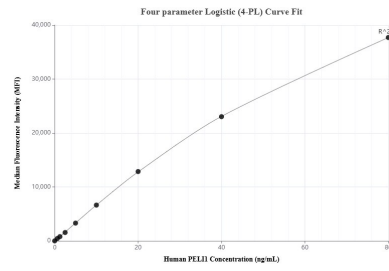
E: proteintech@ptglab.com
W: ptglab.com

This product is exclusively available under Proteintech Group brand and is not available to purchase from any other manufacturer.

Selected Validation Data



The mean PELI1 concentration was determined to be 5.4 ng/mL in Raji cell extract based on a 1.2 mg/mL extract load, 8.3 ng/mL in Daudi cell extract based on a 1.2 mg/mL extract load, 0.9 ng/mL in HeLa cell extract based on a 1.2 mg/mL extract load.



Cytometric bead array standard curve of MP03109-1, PELI1 Recombinant Matched Antibody Pair, PBS Only. Capture antibody: 87624-4-PBS. Detection antibody: 87624-1-PBS. Standard: Ag2683. Range: 0.625-80 ng/mL.