

For Research Use Only

Mouse LyVE-1 Recombinant monoclonal antibody, PBS Only (Detector)

Catalog Number: 87635-2-PBS



Basic Information

Catalog Number: 87635-2-PBS	GenBank Accession Number: NM_053247.4	Purification Method: Protein A purification
Size: 100ug, Concentration: 1 mg/ml by Nanodrop;	GeneID (NCBI): 114332	CloneNo.: 252928H2
Source: Rabbit	UNIPROT ID: Q8BHCO	
Isotype: IgG	Full Name: Lymphatic vessel endothelial hyaluronan receptor 1	
Immunogen Catalog Number: EG6367	Calculated MW: 35 kDa	

Applications

Tested Applications:
Cytometric bead array, Indirect ELISA

Species Specificity:
mouse

Product Information

87635-2-PBS targets LyVE-1 as part of a matched antibody pair.

MP03135-1: 87635-3-PBS capture and 87635-2-PBS detection (validated in Cytometric bead array)

Unconjugated rabbit recombinant monoclonal antibody in PBS only (BSA and azide free) storage buffer at a concentration of 1 mg/mL, ready for conjugation. Created using Proteintech's proprietary in-house recombinant technology. Recombinant production enables unrivalled batch-to-batch consistency, easy scale-up, and future security of supply.

This conjugation ready format makes antibodies ideal for use in many applications including: ELISAs, multiplex assays requiring matched pairs, mass cytometry, and multiplex imaging applications. Antibody use should be optimized by the end user for each application and assay.

Storage

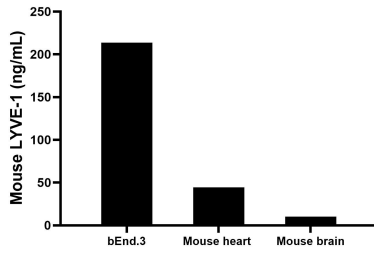
Storage:
Store at -80°C.

Storage Buffer:
PBS only, pH7.3

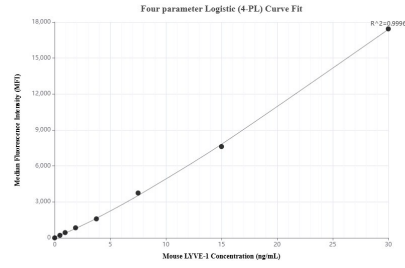
For technical support and original validation data for this product please contact:
T: 1 (888) 4PTGLAB (1-888-478-4522) (toll free in USA), or 1(312) 455-8498 (outside USA) E: proteintech@ptglab.com
W: ptglab.com

This product is exclusively available under Proteintech Group brand and is not available to purchase from any other manufacturer.

Selected Validation Data



The mean LYVE-1 concentration was determined to be 213.6 ng/mL in bEnd.3 cell extract based on a 1.2 mg/mL extract load, 44.3 ng/mL in mouse heart tissue extract based on a 5.4 mg/mL extract load, 10.4 ng/mL in mouse brain tissue extract based on a 2.2 mg/mL extract load.



Cytometric bead array standard curve of MP03135-1, MOUSE LYVE-1 Recombinant Matched Antibody Pair, PBS Only. Capture antibody: 87635-3-PBS. Detection antibody: 87635-2-PBS. Standard: Eg6367. Range: 0.469-30 ng/mL.