

For Research Use Only

# ERBB2IP Recombinant monoclonal antibody

Catalog Number:87639-1-RR



## Basic Information

<b>Catalog Number:</b> 87639-1-RR	<b>GenBank Accession Number:</b> NM_001253697.1	<b>Purification Method:</b> Protein A purification
<b>Size:</b> 100ul , Concentration: 1000 µg/ml by Nanodrop;	<b>GeneID (NCBI):</b> 55914	<b>CloneNo.:</b> 253133B5
<b>Source:</b> Rabbit	<b>UNIPROT ID:</b> Q96RT1-1	<b>Recommended Dilutions:</b> WB: 1:1000-1:5000
<b>Isotype:</b> IgG	<b>Full Name:</b> erbb2 interacting protein	
<b>Immunogen Catalog Number:</b> EG5491	<b>Calculated MW:</b> 158 kDa	
	<b>Observed MW:</b> 150-180 kDa	

## Applications

<b>Tested Applications:</b> WB, ELISA	<b>Positive Controls:</b> WB : HeLa cells, HEK-293T cells, Jurkat cells, U2OS cells, MCF-7 cells, MDA-MB-231 cells
<b>Species Specificity:</b> human	

## Background Information

ERBB2IP is a cytoplasmic protein that contains leucine-rich repeats (LRR) and PSD95/Dlg1/zo-1 (PDZ) domain (thus named a LAP protein). ERBB2IP interacts, via its single PDZ domain, specifically with ErbB2, but not with ErbB3, ErbB4, or EGFR. It is colocalized with ErbB2 at the basolateral membranes of epithelial cells. In addition, ERBB2IP also interacts with PSD-95, Lano and with three p120-related catenins, eBPAG1 and the  $\beta_4$  subunit of the  $\alpha_6\beta_4$  integrin, two major components of hemidesmosomes. The molecular weight of ERBB2IP was predicted 150-180 kDa by Western Blot.(PMID: 25288731,PMID: 24252174,PMID: 19289088)

## Storage

**Storage:**  
Store at -20°C. Stable for one year after shipment.  
**Storage Buffer:**  
PBS with 0.02% sodium azide and 50% glycerol, pH7.3  
Aliquoting is unnecessary for -20°C storage

\*\*\* 20ul sizes contain 0.1% BSA

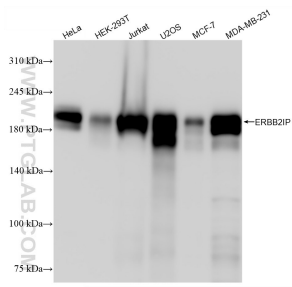
For technical support and original validation data for this product please contact:

T: 1 (888) 4PTGLAB (1-888-478-4522) (toll free in USA), or 1(312) 455-8498 (outside USA)

E: proteintech@ptglab.com  
W: ptglab.com

This product is exclusively available under Proteintech Group brand and is not available to purchase from any other manufacturer.

## Selected Validation Data



Various lysates were subjected to SDS PAGE followed by western blot with 87639-1-RR (ERBB2IP antibody) at dilution of 1:5000 incubated at room temperature for 1.5 hours.