

For Research Use Only

Mouse GGT1 Recombinant monoclonal antibody, PBS Only (Detector)

Catalog Number:87659-1-PBS



Basic Information

Catalog Number: 87659-1-PBS	GenBank Accession Number: NM_001305992.1	Purification Method: Protein A purification
Size: 100ug , Concentration: 1 mg/ml by Nanodrop;	GeneID (NCBI): 14598	CloneNo.: 253090C2
Source: Rabbit	UNIPROT ID: Q60928	
Isotype: IgG	Full Name: gamma-glutamyltransferase 1	
Immunogen Catalog Number: EG6301	Calculated MW: 62 kDa	
	Observed MW: 50-61 kDa	

Applications

Tested Applications:
WB, Cytometric bead array, Indirect ELISA

Species Specificity:
mouse, rat

Product Information

87659-1-PBS targets GGT1 as part of a matched antibody pair:

MP03153-1: 87659-3-PBS capture and 87659-1-PBS detection (validated in Cytometric bead array)

Unconjugated rabbit recombinant monoclonal antibody in PBS only (BSA and azide free) storage buffer at a concentration of 1 mg/mL, ready for conjugation. Created using Proteintech's proprietary in-house recombinant technology. Recombinant production enables unrivalled batch-to-batch consistency, easy scale-up, and future security of supply.

This conjugation ready format makes antibodies ideal for use in many applications including: ELISAs, multiplex assays requiring matched pairs, mass cytometry, and multiplex imaging applications. Antibody use should be optimized by the end user for each application and assay.

Background Information

GGT1 is a heterodimer composed of light chain and heavy chain, and its active site is located in the light chain. The metabolism of glutathione by GGT1 releases free glutamic acid and dipeptide cysteine-glycine, which can be hydrolyzed into cysteine and glycine by dipeptidase. In the presence of high concentration of dipeptide and some amino acids, it can also catalyze the peptide transfer reaction and transfer γ -glutamyl group to receptor amino acids to form new γ -glutamyl compounds. Participate in cysteine homeostasis, glutathione homeostasis and the transformation of leukotriene LTC₄ to LTD₄ (PMID:12810527).

Storage

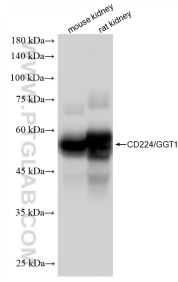
Storage:
Store at -80°C.

Storage Buffer:
PBS only, pH7.3

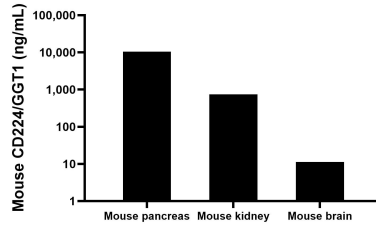
For technical support and original validation data for this product please contact:
T: 1 (888) 4PTGLAB (1-888-478-4522) (toll free in USA), or 1(312) 455-8498 (outside USA)
E: proteintech@ptglab.com
W: ptglab.com

This product is exclusively available under Proteintech Group brand and is not available to purchase from any other manufacturer.

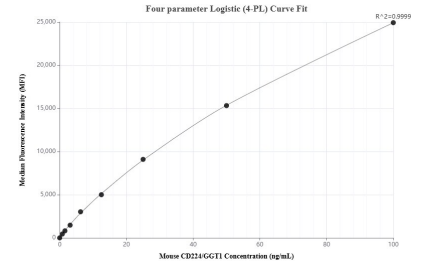
Selected Validation Data



Various lysates were subjected to SDS PAGE followed by western blot with 87659-1-RR (CD224/IGT1 antibody) at dilution of 1:10000 incubated at room temperature for 1.5 hours. This data was developed using the same antibody clone with 87659-1-PBS in a different storage buffer formulation.



The mean CD224/IGT1 concentration was determined to be 10438.8 ng/mL in mouse pancreas tissue extract based on a 10.6 mg/mL extract load, 747.6 ng/mL in mouse kidney tissue extract based on a 7.8 mg/mL extract load, 11.3 ng/mL in mouse brain tissue extract based on a 2.2 mg/mL extract load.



Cytometric bead array standard curve of MP03153-1, MOUSE CD224/IGT1 Recombinant Matched Antibody Pair, PBS Only. Capture antibody: 87659-3-PBS. Detection antibody: 87659-1-PBS. Standard: Eg6301. Range: 0.781-100 ng/mL