

For Research Use Only

Mouse CD224/GGT1 Recombinant monoclonal antibody, PBS Only (Capture)

Catalog Number: 87659-3-PBS



Basic Information

Catalog Number: 87659-3-PBS	GenBank Accession Number: NM_001305992.1	Purification Method: Protein A purification
Size: 100ug , Concentration: 1 mg/ml by Nanodrop;	GeneID (NCBI): 14598	CloneNo.: 253090F7
Source: Rabbit	UNIPROT ID: Q60928	
Isotype: IgG	Full Name: gamma-glutamyltransferase 1	
Immunogen Catalog Number: EG6301	Calculated MW: 62 kDa	

Applications

Tested Applications:
Cytometric bead array, Sandwich ELISA, Indirect ELISA

Species Specificity:
mouse

Product Information

87659-3-PBS targets CD224/GGT1 as part of a matched antibody pair:

MP03153-1: 87659-3-PBS capture and 87659-1-PBS detection (validated in Cytometric bead array)

MP03153-2: 87659-3-PBS capture and 87659-2-PBS detection (validated in Sandwich ELISA)

Unconjugated rabbit recombinant monoclonal antibody in PBS only (BSA and azide free) storage buffer at a concentration of 1 mg/mL, ready for conjugation. Created using Proteintech's proprietary in-house recombinant technology. Recombinant production enables unrivalled batch-to-batch consistency, easy scale-up, and future security of supply.

This conjugation ready format makes antibodies ideal for use in many applications including: ELISAs, multiplex assays requiring matched pairs, mass cytometry, and multiplex imaging applications. Antibody use should be optimized by the end user for each application and assay.

Storage

Storage:
Store at -80°C.
Storage Buffer:
PBS only, pH7.3

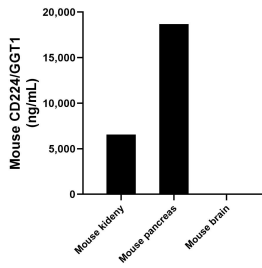
For technical support and original validation data for this product please contact:

T: 1 (888) 4PTGLAB (1-888-478-4522) (toll free in USA), or 1(312) 455-8498 (outside USA)

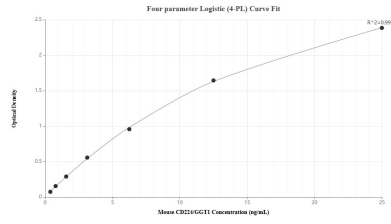
E: proteintech@ptglab.com
W: ptglab.com

This product is exclusively available under Proteintech Group brand and is not available to purchase from any other manufacturer.

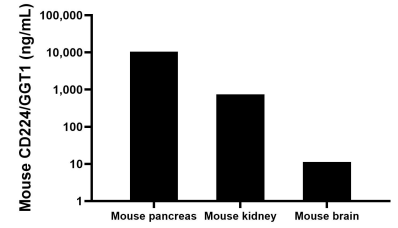
Selected Validation Data



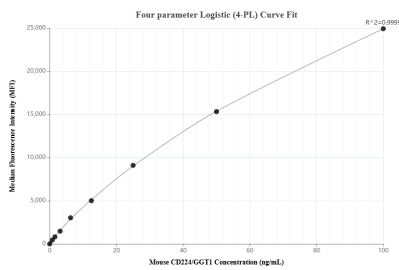
The mean CD224/GGT1 concentration was determined to be 6,546.25 ng/mL in mouse kidney tissue extract based on a 8.4 mg/mL extract load, 18,675.63 ng/mL in mouse pancreas tissue extract based on a 10.6 mg/mL extract load and 6.92 ng/mL in mouse brain tissue extract based on a 8.3 mg/mL extract load.



Sandwich ELISA standard curve of MP03153-2, Mouse CD224/GGT1 Recombinant Matched Antibody Pair - PBS only. 87659-3-PBS was coated to a plate as the capture antibody and incubated with serial dilutions of standard Eg6301. 87659-2-PBS was HRP conjugated as the detection antibody. Range: 0.39-25 ng/mL



The mean CD224/GGT1 concentration was determined to be 10438.8 ng/mL in mouse pancreas tissue extract based on a 10.6 mg/mL extract load, 747.6 ng/mL in mouse kidney tissue extract based on a 7.8 mg/mL extract load, 11.3 ng/mL in mouse brain tissue extract based on a 2.2 mg/mL extract load.



Cytometric bead array standard curve of MP03153-1, MOUSE CD224/GGT1 Recombinant Matched Antibody Pair, PBS Only. Capture antibody: 87659-3-PBS. Detection antibody: 87659-1-PBS. Standard: Eg6301. Range: 0.781-100 ng/mL