

For Research Use Only

Carboxypeptidase M Recombinant monoclonal antibody, PBS Only

Catalog Number:87661-1-PBS



Basic Information

Catalog Number: 87661-1-PBS	GenBank Accession Number: NM_198320.5	Purification Method: Protein A purification
Size: 100ug , Concentration: 1 mg/ml by Nanodrop;	GeneID (NCBI): 1368	CloneNo.: 252972G3
Source: Rabbit	UNIPROT ID: P14384	
Isotype: IgG	Full Name: carboxypeptidase M	
Immunogen Catalog Number: EG5655	Calculated MW: 51 kDa	
	Observed MW: 51 kDa, 62-70 kDa	

Applications

Tested Applications:
WB, Indirect ELISA

Species Specificity:
human

Background Information

CPM(Carboxypeptidase M), a plasma membrane-bound enzyme, is present in many human organs and differs from other carboxypeptidases that cleave basic C-terminal amino acids(PMID:2394713). CPM is structurally, catalytically and immunologically distinct from other carboxypeptidases, and expressed on cell membranes in a glycosyl-phosphatidylinositol-anchored form and it can be a novel marker and cellular player in lipid uptake and/or metabolism of MAs by promoting foam cell formation (PMID:22157720). This full length protein has a signal peptide with 17 amino acid, a propeptide with 20 amino acid and five glycosylation sites.

Storage

Storage:
Store at -80°C.

Storage Buffer:
PBS only, pH7.3

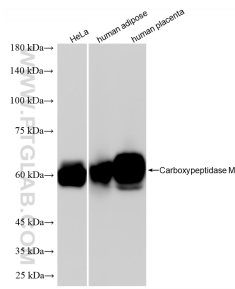
For technical support and original validation data for this product please contact:

T: 1 (888) 4PTGLAB (1-888-478-4522) (toll free in USA), or 1(312) 455-8498 (outside USA)

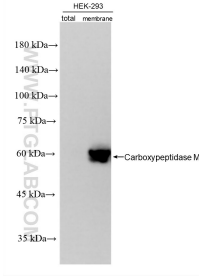
E: proteintech@ptglab.com
W: ptglab.com

This product is exclusively available under Proteintech Group brand and is not available to purchase from any other manufacturer.

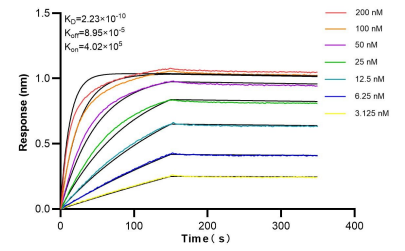
Selected Validation Data



Various lysates were subjected to SDS PAGE followed by western blot with 87661-1-RR (CBPM antibody) at dilution of 1:10000 incubated at room temperature for 1.5 hours. This data was developed using the same antibody clone with 87661-1-PBS in a different storage buffer formulation.



Various lysates were subjected to SDS PAGE followed by western blot with 87661-1-RR (CBPM antibody) at dilution of 1:10000 incubated at room temperature for 1.5 hours. This data was developed using the same antibody clone with 87661-1-PBS in a different storage buffer formulation.



Biolayer interferometry (BLI) kinetic assays of 87661-1-RR against Human Carboxypeptidase M were performed. The affinity constant is 0.223 nM.