

For Research Use Only

Carboxypeptidase M Recombinant monoclonal antibody

Catalog Number:87661-1-RR



Basic Information

| | | |
|--|---|---|
| Catalog Number: 87661-1-RR | GenBank Accession Number: NM_198320.5 | Purification Method: Protein A purification |
| Size: 100ul , Concentration: 1000 µg/ml by Nanodrop; | GeneID (NCBI): 1368 | CloneNo.: 252972G3 |
| Source: Rabbit | UNIPROT ID: P14384 | Recommended Dilutions: WB: 1:5000-1:50000 |
| Isotype: IgG | Full Name: carboxypeptidase M | |
| Immunogen Catalog Number: EG5655 | Calculated MW: 51 kDa | |
| | Observed MW: 51 kDa, 62-70 kDa | |

Applications

| | |
|--|--|
| Tested Applications: WB, ELISA | Positive Controls: WB : HEK-293 cells, HeLa cells, human adipose tissue, human placenta tissue |
| Species Specificity: human | |

Background Information

CPM(Carboxypeptidase M), a plasma membrane-bound enzyme, is present in many human organs and differs from other carboxypeptidases that cleave basic C-terminal amino acids(PMID:2394713). CPM is structurally, catalytically and immunologically distinct from other carboxypeptidases, and expressed on cell membranes in a glycosyl-phosphatidylinositol-anchored form and it can be a novel marker and cellular player in lipid uptake and/or metabolism of MAs by promoting foam cell formation (PMID:22157720). This full length protein has a signal peptide with 17 amino acid, a propeptide with 20 amino acid and five glycosylation sites.

Storage

Storage:
Store at -20°C. Stable for one year after shipment.
Storage Buffer:
PBS with 0.02% sodium azide and 50% glycerol, pH7.3
Aliquoting is unnecessary for -20°C storage

*** 20ul sizes contain 0.1% BSA

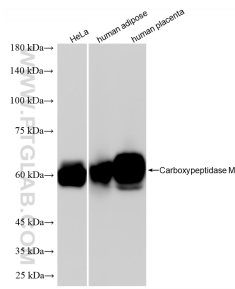
For technical support and original validation data for this product please contact:

T: 1 (888) 4PTGLAB (1-888-478-4522) (toll free in USA), or 1(312) 455-8498 (outside USA)

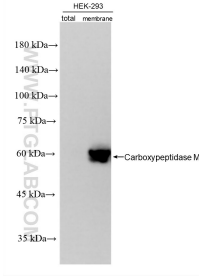
E: proteintech@ptglab.com
W: ptglab.com

This product is exclusively available under Proteintech Group brand and is not available to purchase from any other manufacturer.

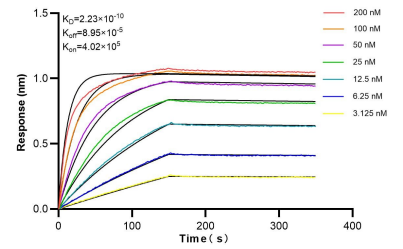
Selected Validation Data



Various lysates were subjected to SDS PAGE followed by western blot with 87661-1-RR (CBPM antibody) at dilution of 1:10000 incubated at room temperature for 1.5 hours.



Various lysates were subjected to SDS PAGE followed by western blot with 87661-1-RR (CBPM antibody) at dilution of 1:10000 incubated at room temperature for 1.5 hours.



Biolayer interferometry (BLI) kinetic assays of 87661-1-RR against Human Carboxypeptidase M were performed. The affinity constant is 0.223 nM.