

For Research Use Only

SSTR2 Recombinant monoclonal antibody

Catalog Number:87663-1-RR



Basic Information

Catalog Number: 87663-1-RR	GenBank Accession Number: BC019610	Purification Method: Protein A purification
Size: 100ul , Concentration: 1000 µg/ml by Nanodrop;	GeneID (NCBI): 6752	CloneNo.: 251649C10
Source: Rabbit	UNIPROT ID: P30874	Recommended Dilutions: WB: 1:1000-1:6000
Isotype: IgG	Full Name: somatostatin receptor 2	
Immunogen Catalog Number: AG14205	Calculated MW: 369 aa, 41 kDa	
	Observed MW: 85 kDa	

Applications

Tested Applications: WB, ELISA	Positive Controls: WB : SH-SY5Y cells, Neuro-2a cells, C6 cells, mouse brain tissue
Species Specificity: human, mouse	

Background Information

Somatostatin receptor 2 (SSTR2) is a G-protein coupled membrane receptor expressed in a variety of neural and neurosecretory tissue types. In neuroendocrine tumors (NETs), in which Somatostatin receptors (SSTRs) are commonly expressed, the detection of SSTR2 expression has both diagnostic and therapeutic potential. Besides NETs, SSTR2 immunostaining can be detected in other types of tumor cells(PMID:34786053). Moreover, SSTR2 is consistently expressed in Olfactory neuroblastoma (ONB) suggesting a role for somatostatin-analog based imaging and therapy in this disease. More generally, SSTR2 may be another marker of neuroendocrine differentiation in ONB(PMID:33929681).

Storage

Storage:
Store at -20°C. Stable for one year after shipment.
Storage Buffer:
PBS with 0.02% sodium azide and 50% glycerol, pH7.3
Aliquoting is unnecessary for -20°C storage

*** 20ul sizes contain 0.1% BSA

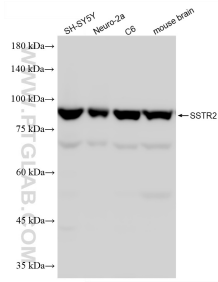
For technical support and original validation data for this product please contact:

T: 1 (888) 4PTGLAB (1-888-478-4522) (toll free in USA), or 1(312) 455-8498 (outside USA)

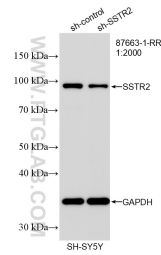
E: proteintech@ptglab.com
W: ptglab.com

This product is exclusively available under Proteintech Group brand and is not available to purchase from any other manufacturer.

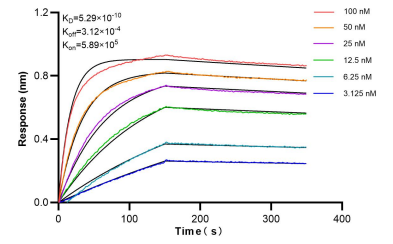
Selected Validation Data



Various lysates were subjected to SDS PAGE followed by western blot with 87663-1-RR (SSTR2 antibody) at dilution of 1:3000 incubated at room temperature for 1.5 hours.



WB result of SSTR2 antibody (87663-1-RR; 1:2000; incubated at room temperature for 1.5 hours) with sh-Control and sh-SSTR2 transfected SH-SY5Y cells.



Bi-layer interferometry (BLI) kinetic assays of 87663-1-RR against Human SSTR2 were performed. The affinity constant is 0.529 nM.