

For Research Use Only

SPRY4 Recombinant monoclonal antibody

Catalog Number: 87666-1-RR



Basic Information

Catalog Number: 87666-1-RR	GenBank Accession Number: BC125095	Purification Method: Protein A purification
Size: 100ul , Concentration: 1000 µg/ml by Nanodrop;	GeneID (NCBI): 81848	CloneNo.: 253045D12
Source: Rabbit	UNIPROT ID: Q9C004	Recommended Dilutions: WB: 1:1000-1:4000 IF/ICC: 1:250-1:1000
Isotype: IgG	Full Name: sprouty homolog 4 (Drosophila)	
Immunogen Catalog Number: AG18574	Calculated MW: 299 aa, 33 kDa	
	Observed MW: 35-38 kDa	

Applications

Tested Applications: WB, IF/ICC, ELISA	Positive Controls: WB : A375 cells, PC-3 cells, HepG2 cells
Species Specificity: human	IF/ICC : A375 cells,

Background Information

SPRY4, also named as Protein sprouty homolog 4, is a 299 amino acid protein, which contains one SPR (sprouty) domain and belongs to the sprouty family. SPRY4 Suppresses the INS receptor and EGFR-transduced MAPK signaling pathway, but does not inhibit MAPK activation by a constitutively active mutant Ras. Probably impairs the formation of GTP-Ras. SPRY4 has a cellular function to regulate the actin cytoskeleton, independent of its inhibitory activity on the Ras/MAP kinase signalling. SPRY1, SPRY2, SPRY3, SPRY4, are central and complex regulators of the receptor tyrosine kinase (RTK) signalling pathway.

Storage

Storage:
Store at -20°C. Stable for one year after shipment.
Storage Buffer:
PBS with 0.02% sodium azide and 50% glycerol, pH7.3
Aliquoting is unnecessary for -20°C storage

*** 20ul sizes contain 0.1% BSA

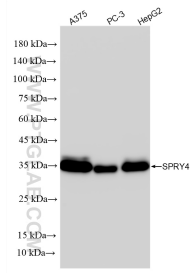
For technical support and original validation data for this product please contact:

T: 1 (888) 4PTGLAB (1-888-478-4522) (toll free in USA), or 1(312) 455-8498 (outside USA)

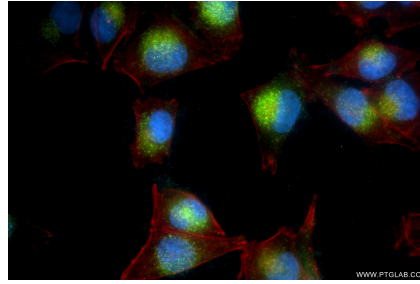
E: proteintech@ptglab.com
W: ptglab.com

This product is exclusively available under Proteintech Group brand and is not available to purchase from any other manufacturer.

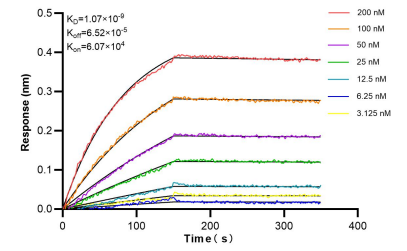
Selected Validation Data



Various lysates were subjected to SDS PAGE followed by western blot with 87666-1-RR (SPRY4 antibody) at dilution of 1:2000 incubated at room temperature for 1.5 hours.



Immunofluorescent analysis of (4% PFA) fixed A375 cells using SPRY4 antibody (87666-1-RR, Clone: 253045D12) at dilution of 1:500 and CoraLite® 488-Conjugated Goat Anti-Rabbit IgG(H+L) (SA00013-2), CL594-Phalloidin (red).



Biolayer interferometry (BLI) kinetic assays of 87666-1-RR against Human SPRY4 were performed. The affinity constant is 1.07 nM.