

For Research Use Only

SPRY4 Recombinant monoclonal antibody, PBS Only (Capture)

Catalog Number: 87666-4-PBS



Basic Information

| | | |
|---|---|---|
| Catalog Number: 87666-4-PBS | GenBank Accession Number: BC125095 | Purification Method: Protein A purification |
| Size: 100ug , Concentration: 1 mg/ml by Nanodrop; | GeneID (NCBI): 81848 | CloneNo.: 253045F10 |
| Source: Rabbit | UNIPROT ID: Q9C004 | |
| Isotype: IgG | Full Name: sprouty homolog 4 (Drosophila) | |
| Immunogen Catalog Number: AG18574 | Calculated MW: 299 aa, 33 kDa | |

Applications

Tested Applications:
Sandwich ELISA, Indirect ELISA

Species Specificity:
human

Product Information

87666-4-PBS targets SPRY4 as part of a matched antibody pair:

MP03152-2: 87666-4-PBS capture and 87666-5-PBS detection (validated in Sandwich ELISA)

Unconjugated rabbit recombinant monoclonal antibody in PBS only (BSA and azide free) storage buffer at a concentration of 1 mg/mL, ready for conjugation. Created using Proteintech's proprietary in-house recombinant technology. Recombinant production enables unrivalled batch-to-batch consistency, easy scale-up, and future security of supply.

This conjugation ready format makes antibodies ideal for use in many applications including: ELISAs, multiplex assays requiring matched pairs, mass cytometry, and multiplex imaging applications. Antibody use should be optimized by the end user for each application and assay.

Storage

Storage:
Store at -80°C.

Storage Buffer:
PBS only, pH7.3

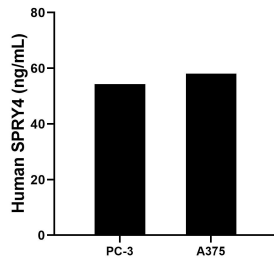
For technical support and original validation data for this product please contact:

T: 1 (888) 4PTGLAB (1-888-478-4522) (toll free in USA), or 1(312) 455-8498 (outside USA)

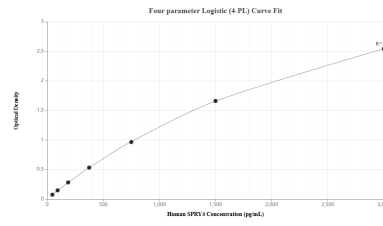
E: proteintech@ptglab.com
W: ptglab.com

This product is exclusively available under Proteintech Group brand and is not available to purchase from any other manufacturer.

Selected Validation Data



The mean SPRY4 concentration was determined to be 54.31 ng/mL in PC-3 cell extract based on a 1.2 mg/mL extract load and 58.09 ng/mL in A375 cell extract based on a 2.0 mg/mL extract load.



Sandwich ELISA standard curve of MP03152-2, Human SPRY4 Recombinant Matched Antibody Pair - PBS only. 87666-4-PBS was coated to a plate as the capture antibody and incubated with serial dilutions of standard Ag18574. 87666-5-PBS was HRP conjugated as the detection antibody. Range: 46.9-3000 pg/mL