

For Research Use Only

Smoothelin Recombinant monoclonal antibody

Catalog Number: 87674-7-RR



Basic Information

Catalog Number: 87674-7-RR	GenBank Accession Number: BC034237	Purification Method: Protein A purification
Size: 100ul , Concentration: 1000 µg/ml by Nanodrop;	GeneID (NCBI): 6525	CloneNo.: 253233C1
Source: Rabbit	UNIPROT ID: P53814	Recommended Dilutions: WB: 1:500-1:2000
Isotype: IgG	Full Name: smoothelin	
Immunogen Catalog Number: AG19983	Calculated MW: 940 aa, 102 kDa	
	Observed MW: 59 kDa and 117 kDa	

Applications

Tested Applications: WB, ELISA	Positive Controls: WB : 5637 cells, COLO 320 cells, mouse colon tissue, PC-3 cells, MCF-7 cells, rat colon tissue
Species Specificity: human, mouse, rat	

Background Information

Smoothelin is a cytoskeletal-associated protein expressed specifically in differentiated smooth muscle cells (SMCs). It exists in two main isoforms: the ~59 kDa Smoothelin-A in visceral SMCs and the ~110 kDa Smoothelin-B in vascular SMCs, generated through a dual-promoter system and alternative splicing. Smoothelin serves as a reliable marker of contractile SMCs and helps maintain the contractile phenotype by interacting with actin filaments and other cytoskeletal components. This antibody reacts with the 59 kDa and 117 kDa bands, corresponding to isoforms A and B, respectively.

Storage

Storage:
Store at -20°C. Stable for one year after shipment.
Storage Buffer:
PBS with 0.02% sodium azide and 50% glycerol, pH7.3
Aliquoting is unnecessary for -20°C storage

*** 20ul sizes contain 0.1% BSA

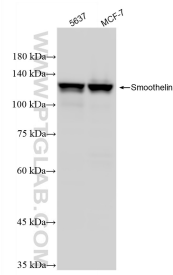
For technical support and original validation data for this product please contact:

T: 1 (888) 4PTGLAB (1-888-478-4522) (toll free in USA), or 1(312) 455-8498 (outside USA)

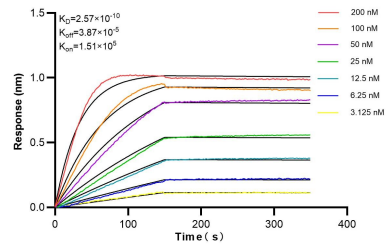
E: proteintech@ptglab.com
W: ptglab.com

This product is exclusively available under Proteintech Group brand and is not available to purchase from any other manufacturer.

Selected Validation Data



Various lysates were subjected to SDS PAGE followed by western blot with 87674-7-RR (Smoothelin antibody) at dilution of 1:1000 incubated at room temperature for 1.5 hours.



Biolayer interferometry (BLI) kinetic assays of 87674-7-RR against Human Smoothelin were performed. The affinity constant is 0.257 nM.