

For Research Use Only

AADACL1 Recombinant monoclonal antibody, PBS Only

Catalog Number:87679-2-PBS



Basic Information

| | | |
|---|---|---|
| Catalog Number: 87679-2-PBS | GenBank Accession Number: BC047588 | Purification Method: Protein A purification |
| Size: 100ug , Concentration: 1 mg/ml by Nanodrop; | GeneID (NCBI): 57552 | CloneNo.: 253123B2 |
| Source: Rabbit | UNIPROT ID: Q6PIU2 | |
| Isotype: IgG | Full Name: arylacetamide deacetylase-like 1 | |
| Immunogen Catalog Number: AG5136 | Calculated MW: 46 kDa | |
| | Observed MW: 40-50 kDa | |

Applications

Tested Applications:
WB, Indirect ELISA

Species Specificity:
human, rat

Background Information

AADACL1(Arylacetamide deacetylase-like 1) is also named as NCEH1, KIAA1363 and belongs to the 'GDYG' lipolytic enzyme family. The transmembrane enzyme, AADACL1, controls the production of the monoalkylglycerol ether (MAGE) class of NELS in cancer cells and acts as a 2-acetyl MAGE hydrolase and is likely the principal source for this activity in tumor cells(PMID:21513884). The full length protein has three glycosylation sites and can be N-glycosylated(PMID:19159218). It has 3 isoforms produced by alternative splicing.

Storage

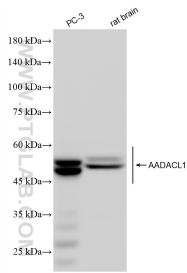
Storage:
Store at -80°C.

Storage Buffer:
PBS only, pH7.3

For technical support and original validation data for this product please contact:
T: 1 (888) 4PTGLAB (1-888-478-4522) (toll free in USA), or 1(312) 455-8498 (outside USA) E: proteintech@ptglab.com
W: ptglab.com

This product is exclusively available under Proteintech Group brand and is not available to purchase from any other manufacturer.

Selected Validation Data



Various lysates were subjected to SDS PAGE followed by western blot with 87679-2-RR (AADACL1 antibody) at dilution of 1:5000 incubated at room temperature for 1.5 hours. This data was developed using the same antibody clone with 87679-2-PBS in a different storage buffer formulation.