

For Research Use Only

# AADACL1 Recombinant monoclonal antibody

Catalog Number:87679-2-RR



## Basic Information

<b>Catalog Number:</b> 87679-2-RR	<b>GenBank Accession Number:</b> BC047588	<b>Purification Method:</b> Protein A purification
<b>Size:</b> 100ul , Concentration: 1000 µg/ml by Nanodrop;	<b>GeneID (NCBI):</b> 57552	<b>CloneNo.:</b> 253123B2
<b>Source:</b> Rabbit	<b>UNIPROT ID:</b> Q6PIU2	<b>Recommended Dilutions:</b> WB: 1:2000-1:10000
<b>Isotype:</b> IgG	<b>Full Name:</b> arylacetamide deacetylase-like 1	
<b>Immunogen Catalog Number:</b> AG5136	<b>Calculated MW:</b> 46 kDa	
	<b>Observed MW:</b> 40-50 kDa	

## Applications

<b>Tested Applications:</b> WB, ELISA	<b>Positive Controls:</b> WB : PC-3 cells, rat brain tissue
<b>Species Specificity:</b> human, rat	

## Background Information

AADACL1(Arylacetamide deacetylase-like 1) is also named as NCEH1, KIAA1363 and belongs to the 'GDHG' lipolytic enzyme family. The transmembrane enzyme, AADACL1, controls the production of the monoalkylglycerol ether (MAGE) class of NELS in cancer cells and acts as a 2-acetyl MAGE hydrolase and is likely the principal source for this activity in tumor cells(PMID:21513884). The full length protein has three glycosylation sites and can be N-glycosylated(PMID:19159218). It has 3 isoforms produced by alternative splicing.

## Storage

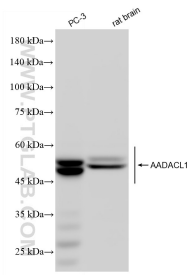
**Storage:**  
Store at -20°C. Stable for one year after shipment.  
**Storage Buffer:**  
PBS with 0.02% sodium azide and 50% glycerol, pH7.3  
Aliquoting is unnecessary for -20°C storage

\*\*\* 20ul sizes contain 0.1% BSA

For technical support and original validation data for this product please contact:  
T: 1 (888) 4PTGLAB (1-888-478-4522) (toll free in USA), or 1(312) 455-8498 (outside USA)      E: proteintech@ptglab.com  
W: ptglab.com

This product is exclusively available under Proteintech Group brand and is not available to purchase from any other manufacturer.

## Selected Validation Data



Various lysates were subjected to SDS PAGE followed by western blot with 87679-2-RR (AADACL1 antibody) at dilution of 1:5000 incubated at room temperature for 1.5 hours.