

For Research Use Only

# Mouse CD238/Kell/KEL Recombinant monoclonal antibody, PBS Only (Detector)

Catalog Number: 87688-1-PBS



## Basic Information

<b>Catalog Number:</b> 87688-1-PBS	<b>GenBank Accession Number:</b> NM_032540.3	<b>Purification Method:</b> Protein A purification
<b>Size:</b> 100ug, Concentration: 1 mg/ml by Nanodrop;	<b>GeneID (NCBI):</b> 23925	<b>CloneNo.:</b> 253180D2
<b>Source:</b> Rabbit	<b>UNIPROT ID:</b> Q9EQF2	
<b>Isotype:</b> IgG	<b>Full Name:</b> Kell blood group	
<b>Immunogen Catalog Number:</b> EG6305	<b>Calculated MW:</b> 81 kDa	

## Applications

**Tested Applications:**  
Cytometric bead array, Indirect ELISA

**Species Specificity:**  
mouse

## Product Information

87688-1-PBS targets CD238/Kell/KEL as part of a matched antibody pair:

MP03154-1: 87688-2-PBS capture and 87688-1-PBS detection (validated in Cytometric bead array)

Unconjugated rabbit recombinant monoclonal antibody in PBS only (BSA and azide free) storage buffer at a concentration of 1 mg/mL, ready for conjugation. Created using Proteintech's proprietary in-house recombinant technology. Recombinant production enables unrivalled batch-to-batch consistency, easy scale-up, and future security of supply.

This conjugation ready format makes antibodies ideal for use in many applications including: ELISAs, multiplex assays requiring matched pairs, mass cytometry, and multiplex imaging applications. Antibody use should be optimized by the end user for each application and assay.

## Storage

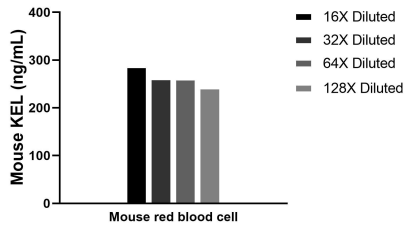
**Storage:**  
Store at -80°C.

**Storage Buffer:**  
PBS only, pH7.3

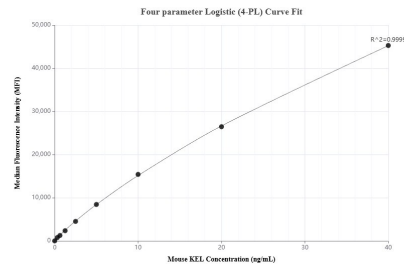
For technical support and original validation data for this product please contact:  
T: 1 (888) 4PTGLAB (1-888-478-4522) (toll free in USA), or 1(312) 455-8498 (outside USA)      E: proteintech@ptglab.com  
W: ptglab.com

**This product is exclusively available under Proteintech Group brand and is not available to purchase from any other manufacturer.**

## Selected Validation Data



The mean KEL concentration was determined to be 263.0 ng/mL in mouse red blood cell lysate.



Cytometric bead array standard curve of MP03154-1, MOUSE KEL Recombinant Matched Antibody Pair, PBS Only. Capture antibody: 87688-2-PBS. Detection antibody: 87688-1-PBS. Standard: Eg6305. Range: 0.312-40 ng/mL.