

For Research Use Only

Mouse PTPRF Recombinant monoclonal antibody, PBS Only (Detector)

Catalog Number: 87690-1-PBS



Basic Information

Catalog Number: 87690-1-PBS	GenBank Accession Number: NM_011213.2	Purification Method: Protein A purification
Size: 100ug , Concentration: 1 mg/ml by Nanodrop;	GeneID (NCBI): 19268	CloneNo.: 253228C3
Source: Rabbit	UNIPROT ID: A2A8L5	
Isotype: IgG	Full Name: protein tyrosine phosphatase, receptor type, F	
Immunogen Catalog Number: EG6805	Calculated MW: 211 kDa	

Applications

Tested Applications:
Cytometric bead array, Indirect ELISA

Species Specificity:
mouse

Product Information

87690-1-PBS targets PTPRF as part of a matched antibody pair:

MP03157-1: 87690-2-PBS capture and 87690-1-PBS detection (validated in Cytometric bead array)

Unconjugated rabbit recombinant monoclonal antibody in PBS only (BSA and azide free) storage buffer at a concentration of 1 mg/mL, ready for conjugation. Created using Proteintech's proprietary in-house recombinant technology. Recombinant production enables unrivalled batch-to-batch consistency, easy scale-up, and future security of supply.

This conjugation ready format makes antibodies ideal for use in many applications including: ELISAs, multiplex assays requiring matched pairs, mass cytometry, and multiplex imaging applications. Antibody use should be optimized by the end user for each application and assay.

Storage

Storage:
Store at -80°C.

Storage Buffer:
PBS only, pH7.3

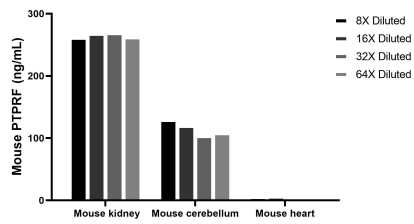
For technical support and original validation data for this product please contact:

T: 1 (888) 4PTGLAB (1-888-478-4522) (toll free in USA), or 1(312) 455-8498 (outside USA)

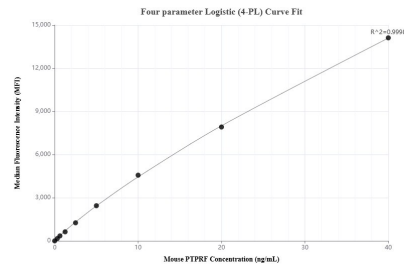
E: proteintech@ptglab.com
W: ptglab.com

This product is exclusively available under Proteintech Group brand and is not available to purchase from any other manufacturer.

Selected Validation Data



The mean PTPRF concentration was determined to be 264.8 ng/mL in mouse kidney tissue extract based on a 8.4 mg/mL extract load, 114.9 ng/mL in mouse cerebellum tissue extract based on a 6.0 mg/mL extract load, 5.4 ng/mL in mouse heart tissue extract based on a 5.4 mg/mL extract load.



Cytometric bead array standard curve of MP03157-1, MOUSE PTPRF Recombinant Matched Antibody Pair, PBS Only. Capture antibody: 87690-2-PBS. Detection antibody: 87690-1-PBS. Standard: Eg6805. Range: 0.312-40 ng/mL.