

For Research Use Only

CST6 / Cystatin E/M Recombinant monoclonal antibody

Catalog Number:87698-1-RR



Basic Information

Catalog Number: 87698-1-RR	GenBank Accession Number: BC031334	Purification Method: Protein A purification
Size: 100ul , Concentration: 1000 µg/ml by Nanodrop;	GeneID (NCBI): 1474	CloneNo.: 253181F12
Source: Rabbit	UNIPROT ID: Q15828	Recommended Dilutions: WB: 1:500-1:2000
Isotype: IgG	Full Name: cystatin E/M	
Immunogen Catalog Number: EG7630	Calculated MW: 149 aa, 17 kDa	
	Observed MW: 13 kDa	

Applications

Tested Applications: WB, ELISA	Positive Controls: WB : HCT 116 cells,
Species Specificity: human	

Background Information

Cystatin E/M, also known as Cystatin 6 or Cystatin M, is a protein encoded by the CST6 gene in humans . It belongs to the type 2 cystatin family. The cystatin superfamily is a well-established group of cysteine protease inhibitors, which are proteins that block the activity of certain enzymes that break down other proteins . Within this superfamily, type 2 cystatins, including Cystatin E/M, are typically extracellular proteins found in various body fluids and secretions. One of the most critical roles of Cystatin E/M is in the formation and maintenance of the skin barrier. It regulates a specific proteolytic pathway essential for epidermal cornification (the formation of the outer skin layer) and hair follicle morphogenesis.

Storage

Storage:
Store at -20°C. Stable for one year after shipment.
Storage Buffer:
PBS with 0.02% sodium azide and 50% glycerol, pH7.3
Aliquoting is unnecessary for -20°C storage

*** 20ul sizes contain 0.1% BSA

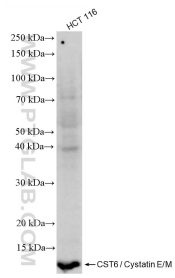
For technical support and original validation data for this product please contact:

T: 1 (888) 4PTGLAB (1-888-478-4522) (toll free in USA), or 1(312) 455-8498 (outside USA)

E: proteintech@ptglab.com
W: ptglab.com

This product is exclusively available under Proteintech Group brand and is not available to purchase from any other manufacturer.

Selected Validation Data



HCT 116 cells were subjected to SDS PAGE followed by western blot with 87698-1-RR (CST6 / Cystatin E/M antibody) at dilution of 1:1000 incubated at room temperature for 1.5 hours.