

For Research Use Only

RPL26L1 Recombinant monoclonal antibody

Catalog Number: 87720-1-RR



Basic Information

Catalog Number: 87720-1-RR	GenBank Accession Number: BC017360	Purification Method: Protein A purification
Size: 100ul , Concentration: 1000 µg/ml by Nanodrop;	GeneID (NCBI): 51121	CloneNo.: 253255G12
Source: Rabbit	UNIPROT ID: Q9UNX3	Recommended Dilutions: WB: 1:1000-1:4000
Isotype: IgG	Full Name: ribosomal protein L26-like 1	
Immunogen Catalog Number: AG9609	Calculated MW: 145 aa, 17 kDa	
	Observed MW: 20 kDa	

Applications

Tested Applications: WB, ELISA	Positive Controls: WB : HeLa cells, HepG2 cells, K-562 cells, HEK-293 cells, PANC-1 cells, NIH/3T3 cells, PC-3 cells
Species Specificity: human, mouse, rat	

Background Information

RPL26L1, also named as RPL26P1, belongs to the universal ribosomal protein uL24 family. RPL26L1 shares high sequence similarity with ribosomal protein L26 and plays a role in protein synthesis (PMID: 31673979). The molecular mass of RPL26L1 is 17 kDa. Studies have shown that RPL26L1 is related to autism spectrum disorder and is one of the potential biomarkers of the neurodegenerative disease Friedreich's ataxia. In addition, RPL26L1 may be closely related with SLE development (PMID: 31889427).

Storage

Storage:
Store at -20°C. Stable for one year after shipment.
Storage Buffer:
PBS with 0.02% sodium azide and 50% glycerol, pH7.3
Aliquoting is unnecessary for -20°C storage

*** 20ul sizes contain 0.1% BSA

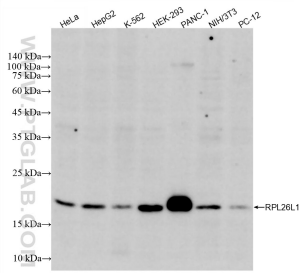
For technical support and original validation data for this product please contact:

T: 1 (888) 4PTGLAB (1-888-478-4522) (toll free in USA), or 1(312) 455-8498 (outside USA)

E: proteintech@ptglab.com
W: ptglab.com

This product is exclusively available under Proteintech Group brand and is not available to purchase from any other manufacturer.

Selected Validation Data



Various lysates were subjected to SDS PAGE followed by western blot with 87720-1-RR (RPL26L1 antibody) at dilution of 1:2000 incubated at room temperature for 1.5 hours.