

For Research Use Only

# SUFU Recombinant monoclonal antibody, PBS Only (Detector)

Catalog Number: 87724-1-PBS



## Basic Information

<b>Catalog Number:</b> 87724-1-PBS	<b>GenBank Accession Number:</b> BC013291	<b>Purification Method:</b> Protein A purification
<b>Size:</b> 100ug , Concentration: 1 mg/ml by Nanodrop;	<b>GeneID (NCBI):</b> 51684	<b>CloneNo.:</b> 253256G1
<b>Source:</b> Rabbit	<b>UNIPROT ID:</b> Q9UMX1	
<b>Isotype:</b> IgG	<b>Full Name:</b> suppressor of fused homolog (Drosophila)	
<b>Immunogen Catalog Number:</b> AG25193	<b>Calculated MW:</b> 54 kDa	
	<b>Observed MW:</b> 54 kDa	

## Applications

**Tested Applications:**  
WB, Cytometric bead array, Indirect ELISA

**Species Specificity:**  
human, rat

## Product Information

87724-1-PBS targets SUFU as part of a matched antibody pair:

MP03174-1: 87724-2-PBS capture and 87724-1-PBS detection (validated in Cytometric bead array)

Unconjugated rabbit recombinant monoclonal antibody in PBS only (BSA and azide free) storage buffer at a concentration of 1 mg/mL, ready for conjugation. Created using Proteintech's proprietary in-house recombinant technology. Recombinant production enables unrivalled batch-to-batch consistency, easy scale-up, and future security of supply.

This conjugation ready format makes antibodies ideal for use in many applications including: ELISAs, multiplex assays requiring matched pairs, mass cytometry, and multiplex imaging applications. Antibody use should be optimized by the end user for each application and assay.

## Background Information

Sufu (Suppressor of fused) is a central regulator of Hh (Hedgehog) signaling and acts as a tumor suppressor by maintaining the Gli (Glioma-associated oncogene homolog) transcription factors inactive. Loss of Sufu function promotes tumorigenesis.

## Storage

**Storage:**  
Store at -80°C.

**Storage Buffer:**  
PBS only, pH7.3

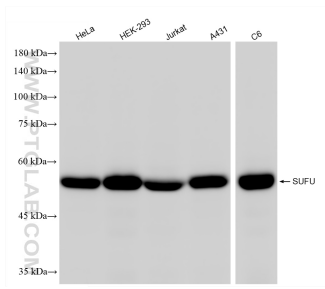
For technical support and original validation data for this product please contact:

T: 1 (888) 4PTGLAB (1-888-478-4522) (toll free in USA), or 1(312) 455-8498 (outside USA)

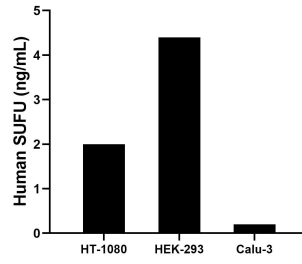
E: [proteintech@ptglab.com](mailto:proteintech@ptglab.com)  
W: [ptglab.com](http://ptglab.com)

**This product is exclusively available under Proteintech Group brand and is not available to purchase from any other manufacturer.**

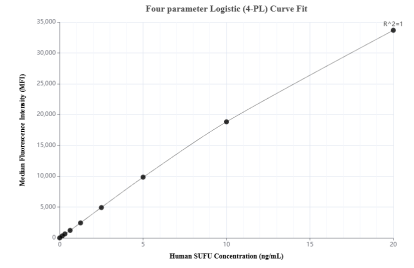
## Selected Validation Data



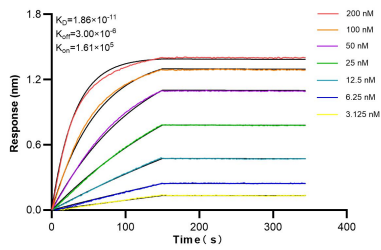
Various lysates were subjected to SDS PAGE followed by western blot with 87724-1-RR (SUFU antibody) at dilution of 1:10000 incubated at room temperature for 1.5 hours. This data was developed using the same antibody clone with 87724-1-PBS in a different storage buffer formulation.



The mean SUFU concentration was determined to be 2.0 ng/mL in HT-1080 cell extract based on a 1.5 mg/mL extract load, 4.4 ng/mL in HEK-293 cell extract based on a 1.2 mg/mL extract load, 0.2 ng/mL in Calu-3 cell extract based on a 1.2 mg/mL extract load.



Cytometric bead array standard curve of MP03174-1, SUFU Recombinant Matched Antibody Pair, PBS Only. Capture antibody: 87724-2-PBS. Detection antibody: 87724-1-PBS. Standard: Ag25193. Range: 0.312-40 ng/mL.



Biolayer interferometry (BLI) kinetic assays of 87724-1-RR against Human SUFU were performed. The affinity constant is 18.6 pM.