

For Research Use Only

SUFU Recombinant monoclonal antibody

Catalog Number:87724-1-RR



Basic Information

Catalog Number: 87724-1-RR	GenBank Accession Number: BC013291	Purification Method: Protein A purification
Size: 100ul , Concentration: 1000 µg/ml by Nanodrop;	GeneID (NCBI): 51684	CloneNo.: 253256G1
Source: Rabbit	UNIPROT ID: Q9UMX1	Recommended Dilutions: WB: 1:5000-1:50000
Isotype: IgG	Full Name: suppressor of fused homolog (Drosophila)	
Immunogen Catalog Number: AG25193	Calculated MW: 54 kDa	
	Observed MW: 54 kDa	

Applications

Tested Applications: WB, ELISA	Positive Controls:
Species Specificity: human, rat	WB : HeLa cells, HEK-293 cell, Jurkat cells, A431 cells, C6 cells

Background Information

Sufu (Suppressor of fused) is a central regulator of Hh (Hedgehog) signaling and acts as a tumor suppressor by maintaining the Gli (Glioma-associated oncogene homolog) transcription factors inactive. Loss of Sufu function promotes tumorigenesis.

Storage

Storage:
Store at -20°C. Stable for one year after shipment.
Storage Buffer:
PBS with 0.02% sodium azide and 50% glycerol, pH7.3
Aliquoting is unnecessary for -20°C storage

*** 20ul sizes contain 0.1% BSA

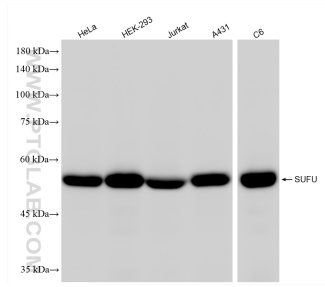
For technical support and original validation data for this product please contact:

T: 1 (888) 4PTGLAB (1-888-478-4522) (toll free in USA), or 1(312) 455-8498 (outside USA)

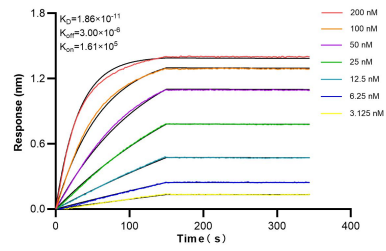
E: proteintech@ptglab.com
W: ptglab.com

This product is exclusively available under Proteintech Group brand and is not available to purchase from any other manufacturer.

Selected Validation Data



Various lysates were subjected to SDS PAGE followed by western blot with 87724-1-RR (SUFU antibody) at dilution of 1:10000 incubated at room temperature for 1.5 hours.



Biolayer interferometry (BLI) kinetic assays of 87724-1-RR against Human SUFU were performed. The affinity constant is 18.6 pM.