

For Research Use Only

IGBP1 Recombinant monoclonal antibody

Catalog Number: 87726-1-RR



Basic Information

Catalog Number: 87726-1-RR	GenBank Accession Number: BC004137	Purification Method: Protein A purification
Size: 100ul , Concentration: 1000 µg/ml by Nanodrop;	GeneID (NCBI): 3476	CloneNo.: 253170E3
Source: Rabbit	UNIPROT ID: P78318	Recommended Dilutions: WB: 1:2000-1:10000 IP: 0.5-4.0 ug for 1.0-3.0 mg of total protein lysate IF/ICC: 1:200-1:800
Isotype: IgG	Full Name: immunoglobulin (CD79A) binding protein 1	
Immunogen Catalog Number: AG6782	Calculated MW: 39 kDa	
	Observed MW: 39 kDa	

Applications

Tested Applications:
WB, IF/ICC, IP, ELISA

Species Specificity:
human, mouse

Positive Controls:
WB : HeLa cells, MCF-7 cells, Raji cells, K-562 cells, Jurkat cells, Ramos cells, NIH/3T3 cells
IP : Jurkat cells,
IF/ICC : HeLa cells,

Background Information

Immunoglobulin-binding protein 1 (IGBP1), also known as ALPHA-4, was originally identified as a signal transduction molecule coprecipitating with MB1 (CD79a) protein of the B-cell antigen receptor (BCR) complex. IGBP1 has been characterized as an essential regulator of the catalytic activity of protein phosphatase 2A (PP2A), which is a ubiquitous phosphatase with broad substrate specificity and diverse cellular functions.

Storage

Storage:
Store at -20°C. Stable for one year after shipment.

Storage Buffer:
PBS with 0.02% sodium azide and 50% glycerol, pH7.3

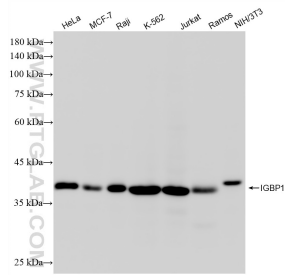
Aliquoting is unnecessary for -20°C storage

*** 20ul sizes contain 0.1% BSA

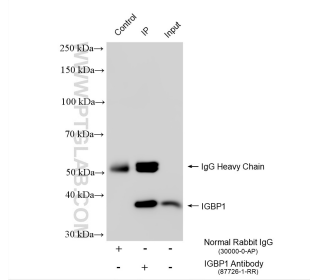
For technical support and original validation data for this product please contact:
T: 1 (888) 4PTGLAB (1-888-478-4522) (toll free in USA), or 1(312) 455-8498 (outside USA) E: proteintech@ptglab.com
W: ptglab.com

This product is exclusively available under Proteintech Group brand and is not available to purchase from any other manufacturer.

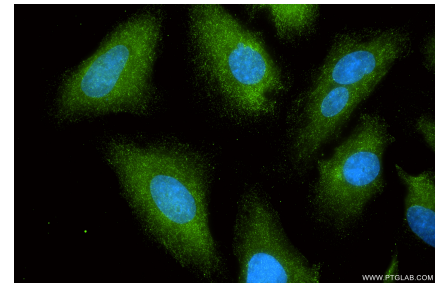
Selected Validation Data



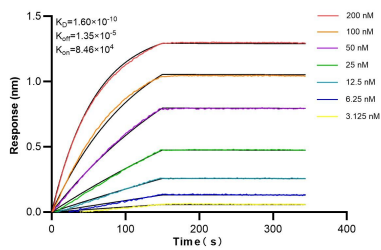
Various lysates were subjected to SDS PAGE followed by western blot with 87726-1-RR (IGBP1 antibody) at dilution of 1:5000 incubated at room temperature for 1.5 hours.



IP result of anti-IGBP1 (IP:87726-1-RR, 4 μ g; Detection:87726-1-RR 1:1000) with Jurkat cells lysate 1080 μ g.



Immunofluorescent analysis of (-20°C Methanol) fixed HeLa cells using IGBP1 antibody (87726-1-RR, Clone: 253170E3) at dilution of 1:400 and Coralite@488-Conjugated Goat Anti-Rabbit IgG(H+L) (SA00013-2).



Biolayer interferometry (BLI) kinetic assays of 87726-1-RR against Human IGBP1 were performed. The affinity constant is 0.16 nM.