

For Research Use Only

# GRM5 Recombinant monoclonal antibody, PBS Only

Catalog Number: 87729-1-PBS



## Basic Information

<b>Catalog Number:</b> 87729-1-PBS	<b>GenBank Accession Number:</b> NM_000842	<b>Purification Method:</b> Protein A purification
<b>Size:</b> 100ug, Concentration: 1 mg/ml by Nanodrop;	<b>GeneID (NCBI):</b> 2915	<b>CloneNo.:</b> 253103B9
<b>Source:</b> Rabbit	<b>UNIPROT ID:</b> P41594	
<b>Isotype:</b> IgG	<b>Full Name:</b> glutamate receptor, metabotropic 5	
	<b>Calculated MW:</b> 132 kDa	
	<b>Observed MW:</b> 120 kDa	

## Applications

**Tested Applications:**  
WB, Indirect ELISA

**Species Specificity:**  
human, mouse, rat

## Background Information

GRM5 (mGluR5) is a group I class C GPCR that couples to Gq/PLC $\beta$  signaling to regulate postsynaptic glutamatergic transmission, calcium signaling, and synaptic plasticity. Highly enriched in cortical, hippocampal, and striatal neurons, GRM5 is a key modulator of learning, memory, excitability, and neurobehavioral circuit function. Dysregulation of GRM5 signaling has been implicated in fragile X syndrome, autism-related disorders, neuropsychiatric disease, chronic pain, and neurodegeneration, making it a major target in CNS drug discovery.

## Storage

**Storage:**  
Store at -80°C.

**Storage Buffer:**  
PBS only, pH7.3

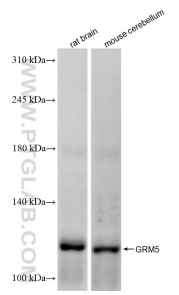
For technical support and original validation data for this product please contact:

T: 1 (888) 4PTGLAB (1-888-478-4522) (toll free in USA), or 1(312) 455-8498 (outside USA)

E: [proteintech@ptglab.com](mailto:proteintech@ptglab.com)  
W: [ptglab.com](http://ptglab.com)

**This product is exclusively available under Proteintech Group brand and is not available to purchase from any other manufacturer.**

## Selected Validation Data



Various lysates were subjected to SDS PAGE followed by western blot with 87729-1-RR (GRM5 antibody) at dilution of 1:1000 incubated at room temperature for 1.5 hours. This data was developed using the same antibody clone with 87729-1-PBS in a different storage buffer formulation.